



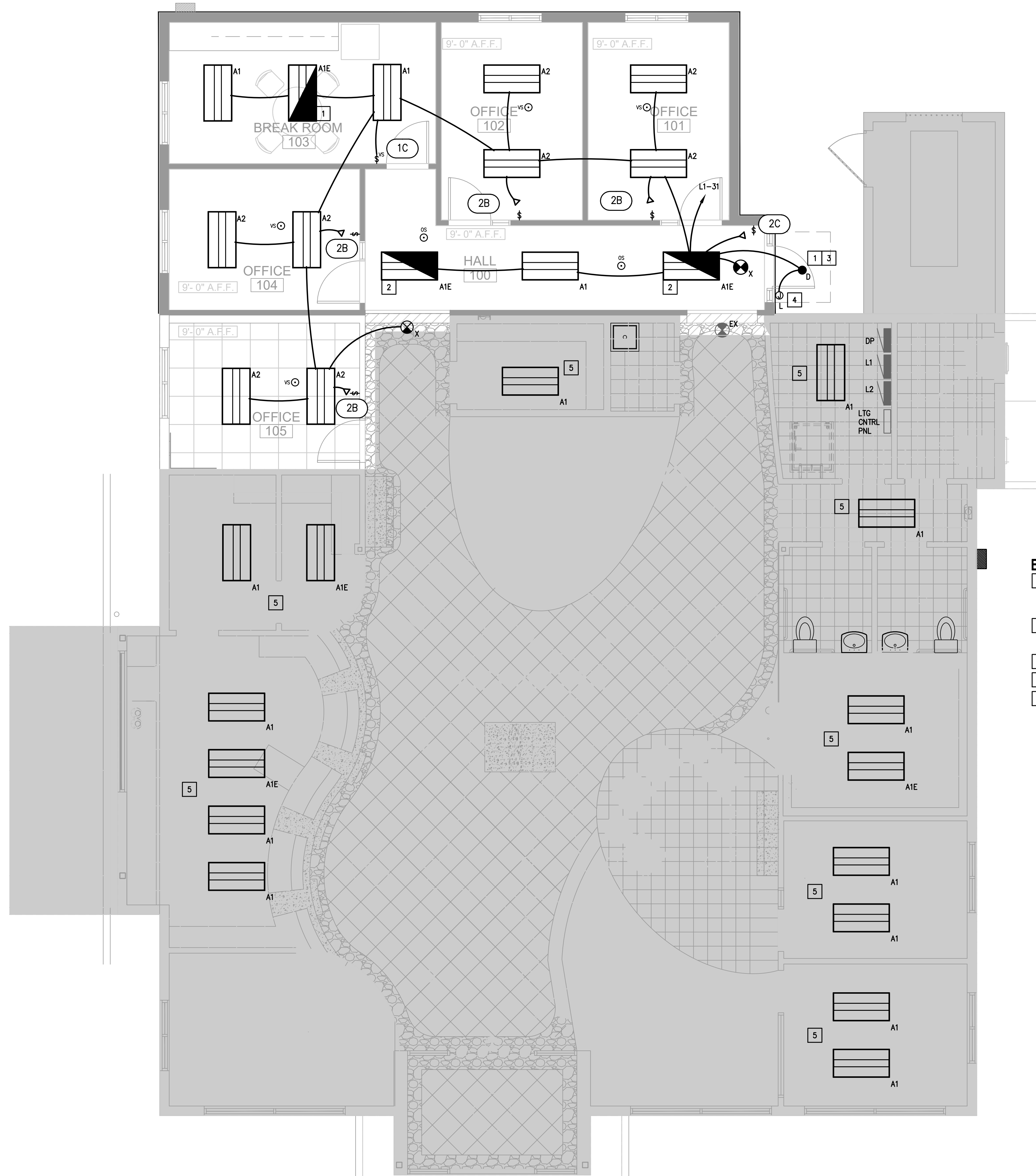
ARCHITECTURE PLANNING INTERIOR DESIGN  
 15810 PARK TEN PLACE, SUITE 300  
 HOUSTON, TEXAS 77084  
 713-465-4650  
 www.sligroup.com

© COPYRIGHT



NECHES LUMBERTON OFFICE ADDITION  
 299 Country Lane at U.S. 69  
 Lumberton, Texas 77657

E/P/B PROJECT NUMBER: 26058.00



**ELECTRICAL LIGHTING KEYED NOTES:**

- 1 CROSS HATCHING INDICATES EMERGENCY LIGHTING. FIXTURE TO BE CONNECTED TO UN-SWITCHED HOT CONDUCTOR WITH 2#10, 1/2" C. PROVIDE FIXTURE WITH 90 MINUTE EMERGENCY BATTERY PACK. FIXTURE TO BE SWITCHED AS SHOWN UNDER NORMAL CONDITIONS.
- 2 CROSS HATCHING INDICATES EMERGENCY LIGHTING. FIXTURE TO BE CONNECTED TO UN-SWITCHED HOT CONDUCTOR WITH 2#10, 1/2" C. PROVIDE FIXTURE WITH 90 MINUTE EMERGENCY BATTERY PACK. FIXTURE TO RUN CONTINUOUSLY AND UN-SWITCHED.
- 3 THIS LIGHT FIXTURE TO BE CONTROLLED VIA PHOTOCELL RECEPTOR.
- 4 CONTROL TAPE LIGHT FIXTURE WITH EXISTING TIMECLOCK.
- 5 REPLACE EXISTING 2'X4' LIGHT FIXTURES IN THIS AREA. REUSE EXISTING CONTROLS AND CIRCUITS. REPLACE FIXTURES WITH 90-MINUTE BATTERY PACKS WITH A1E FIXTURES. CONTRACTOR TO FIELD VERIFY WHICH LIGHT FIXTURES HAVE 90-MINUTE BATTERY PACK.

ISSUED FOR CLIENT APPROVAL	DATE
ISSUED FOR BIDDING	04/30/2026
ISSUED FOR PERMIT	04/30/2026
ISSUED FOR CONSTRUCTION	

**REVISIONS**

MARK	DESCRIPTION	DATE
	REVIEW SET	03-27-2026
	90% REVIEW SET	04-13-2026
	BID AND PERMIT	04-30-2026

The information, ideas, design, details, layouts, techniques, features, arrangements, plans, sequences, dimensions, allowances, tolerances, conceptions, specifications, intentions, technology or embodiments, as illustrated, arranged, displayed, noted, recorded, indicated, represented, disclosed, evidenced, detailed or otherwise reduced to tangible form hereon, either expressly, inherently or by implication, are the confidential and proprietary information of SLI Design, Inc., and shall not be used for any purpose other than the specific project or undertaking identified on the drawing title block or legend for which they are and have been prepared by SLI Design, Inc. Any other reproduction, disclosure or use of any portion of the confidential and proprietary information of SLI Design, Inc., shall be a breach of the obligation of confidence created by the acceptance of this drawing from SLI Design, Inc. for a specific project or Contract. Any copying, duplicating, reproducing, utilization, alteration, modification, revision or change to this drawing, is expressly prohibited unless done with the prior written consent or approval of SLI Design, Inc., and shall not be undertaken without receipt of such prior written approval. This drawing is loaned by SLI Design, Inc., for the limited purpose of complying with a specific Contract. The drawing remains the property of SLI Design, Inc., and shall be returned upon request or completion of the contract, unless specifically authorized by Contract, under which it was loaned.

<b>DESIGN TEAM</b>	
PM:	JG
MECHANICAL:	CC
ELECTRICAL:	JG
PLUMBING:	JG
CHECKED-BY:	JG

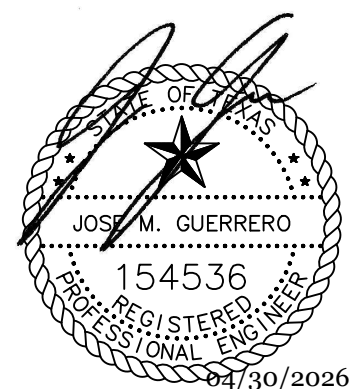
DRAWING TITLE  
**ELECTRICAL LIGHTING PLAN**

SHEET NO.

E-2.00

**01 ELECTRICAL LIGHTING PLAN**  
 SCALE: 1/4"=1'-0"

**E.I.B.E.** Mechanical  
 Electrical  
 Plumbing  
 CONSULTING ENGINEERS  
 12603 Southwest Frwy, Ste 170, Stafford, Tx 77477  
 Tel: (713) 840-0177 / Firm Reg. No: 5638



04/30/2026