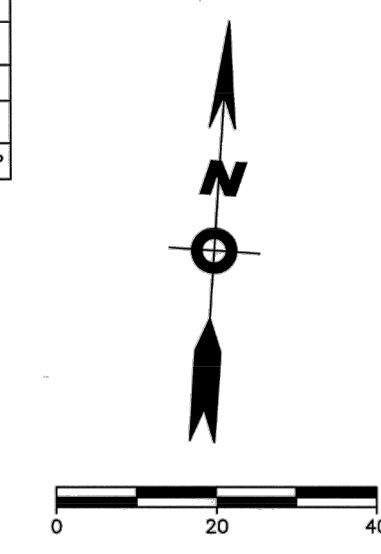


FM 421 (AKA COUNTRY LANE DRIVE) (ASPHALT SURFACE)

| BENCHMARK POINT TABLE | | | | |
|-----------------------|-------------|------------|-----------|-----------------|
| B.M. # | Northing | Easting | Elevation | Row Description |
| 1 | 10105099.42 | 4229633.23 | - | TXDOT MON |
| 2 | 10105231.80 | 4230289.38 | - | 1/2" IRON ROD |
| 3 | - | - | 39.90 | RR SPIKE IN PP |



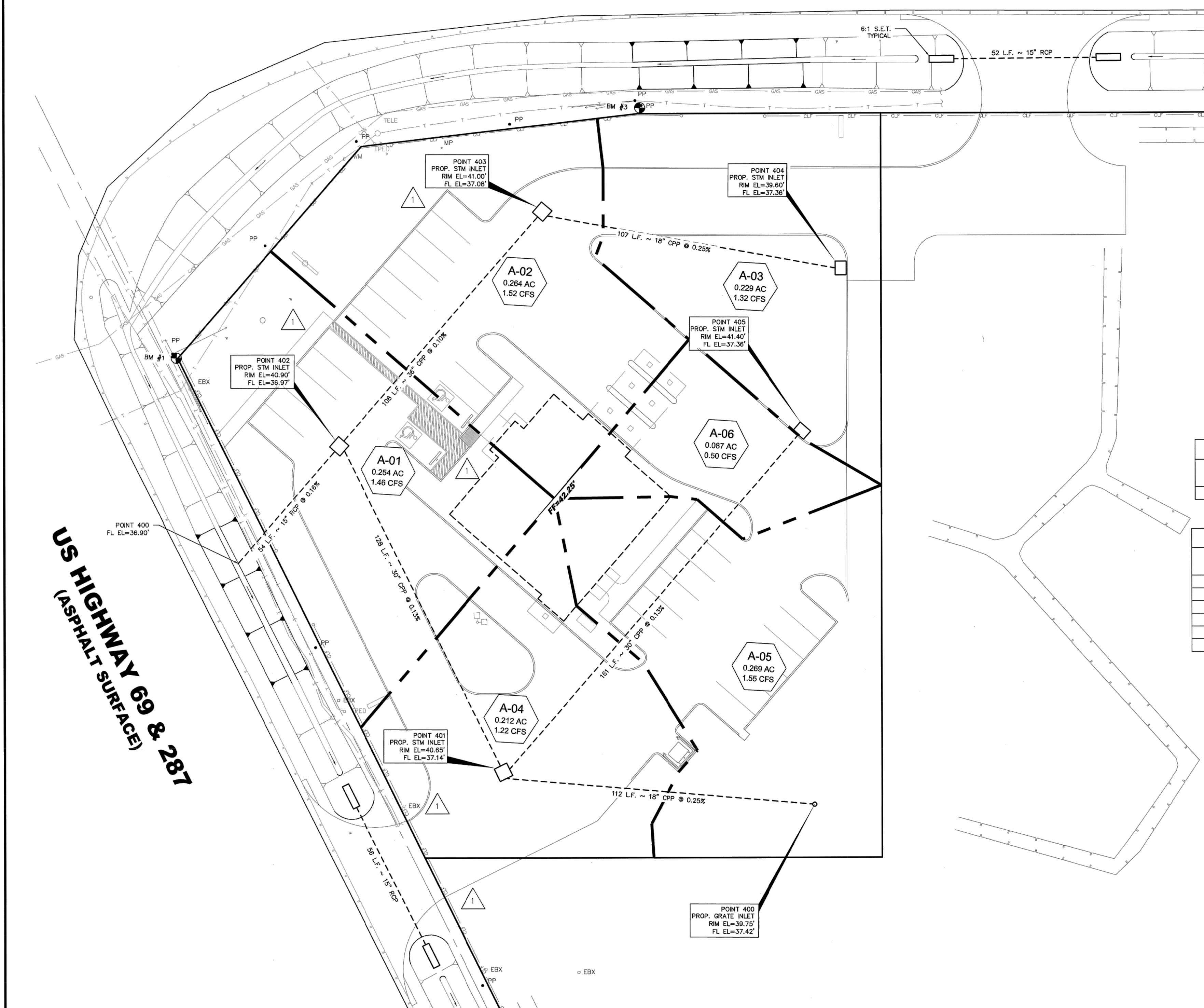
LUMBERTON PAD SITE
U.S. Highway 69 and Country Lane
Lumberton, Texas 77657

PROJECT NUMBER SLI-180

| STORM SEWER POINT INFORMATION | | | | |
|-------------------------------|-------------|------------|-------------|---------------|
| Point # | Northing | Easting | Description | Rim Elevation |
| 400 | 10104952.42 | 4229676.41 | GRATE INLET | 39.75' |
| 401 | 10104956.70 | 4229762.23 | STORM INLET | 40.65' |
| 402 | 10105071.27 | 4229694.50 | STORM INLET | 40.90' |
| 403 | 10105161.31 | 4229763.36 | STORM INLET | 41.00' |
| 404 | 10105147.97 | 4229873.71 | CURB INLET | 39.60' |
| 405 | 10105087.84 | 4229863.07 | CURB INLET | 41.50' |

| PRE-DEVELOPMENT RUNOFF CALCULATIONS | | | | | | | | | |
|-------------------------------------|--------------|--------------|----|-----|---------------|----------|-----------|------|---------|
| Drainage Area | Area (acres) | 5 Year Storm | | | Distance (ft) | tc (min) | I (in/hr) | Cw | Q (cfs) |
| | | e | b | d | | | | | |
| DA-1 | 1.32 | 0.733 | 65 | 7.5 | 230 | 18.75 | 5.93 | 0.30 | 2.35 |

| POST-DEVELOPMENT RUNOFF CALCULATIONS | | | | | | | | | |
|--------------------------------------|--------------|--------------|----|-----|---------------|----------|-----------|------|---------|
| Drainage Area | Area (acres) | 5 Year Storm | | | Distance (ft) | tc (min) | I (in/hr) | Cw | Q (cfs) |
| | | e | b | d | | | | | |
| DA-1 | 0.254 | 0.733 | 65 | 7.5 | 81 | 10.00 | 7.98 | 0.72 | 1.46 |
| DA-2 | 0.264 | 0.733 | 65 | 7.5 | 104 | 10.00 | 7.98 | 0.72 | 1.52 |
| DA-3 | 0.229 | 0.733 | 65 | 7.5 | 101 | 10.00 | 7.98 | 0.72 | 1.32 |
| DA-4 | 0.212 | 0.733 | 65 | 7.5 | 146 | 10.00 | 7.98 | 0.72 | 1.22 |
| DA-5 | 0.269 | 0.733 | 65 | 7.5 | 94 | 10.00 | 7.98 | 0.72 | 1.54 |
| DA-6 | 0.087 | 0.733 | 65 | 7.5 | 92 | 10.00 | 7.98 | 0.72 | 0.50 |



ARCENEUX & GATES
Consulting Engineers, Inc.
Engineers Surveyors Planners

| | | | |
|-------------|--------|-----------|----|
| DRAWN BY | A.R.C. | SHEET NO. | |
| CHECKED BY | M.A.O. | | C7 |
| APPROVED BY | J.M.W. | | |

| ISSUED FOR CLIENT APPROVAL | DATE |
|----------------------------|-----------|
| ISSUED FOR BIDDING | 14 Apr 11 |
| ISSUED FOR PERMIT | 14 Apr 11 |
| ISSUED FOR CONSTRUCTION | 12 May 11 |

| MARK | DESCRIPTION | DATE |
|------|--------------------|------------|
| 1 | SITE PLAN REVISION | 05/12/2011 |

The information, ideas, designs, details, layouts, techniques, features, arrangements, plans, sequences, dimensions, allowances, tolerances, concepts, specifications, intentions, technology or embodiments, as illustrated, arranged, displayed, noted, recorded, indicated, represented, disclosed, evidenced, detailed or otherwise reduced to tangible form herein, either expressly, inherently or by implication, are the confidential and proprietary information of SLI Design, Inc., and shall not be used for any purpose other than the specific project or undertaking identified on the drawing title block or legend for which they are and have been prepared by SLI Design, Inc. Any other reproduction, disclosure or use of any portion of the confidential and proprietary information of SLI Design, Inc., shall be a breach of the obligation of confidence created by the acceptance of this drawing from SLI Design, Inc. for a specific project or Contract. Any copying, disseminating, reproducing, utilization, alteration, modification, revision or change to this drawing, is expressly prohibited unless done with the prior written consent or approval of SLI Design, Inc., and shall not be undertaken without receipt of such prior written approval. This drawing is loaned by SLI Design, Inc., for the limited purpose of complying with a specific Contract. The drawing remains the property of SLI Design, Inc., and shall be returned upon request or completion of the contract, unless specifically authorized by Contract, under which it was issued.

PRO CONSULTING

1334 Britton Road
Suite # 2808
Houston, TX 77043
Firm License F-21665
www.pro.consulting

| DATE | REVISION |
|------------|--------------------------|
| 04/30/2011 | ISSUE FOR PERMIT AND BID |

CONSTRUCTION PLANS FOR
NECHES FEDERAL CREDIT UNION
- LUMBERTON BRANCH
BUILDING ADDITION
(PRIVATE ON-SITE)
PAVING & DRAINAGE FACILITIES

299 COUNTRY LANE DRIVE,
LUMBERTON, TEXAS 77657

EXISTING DRAINAGE AREA MAP
(FOR REFERENCE ONLY)

| | |
|------------------------------|---------------------|
| PRO-E PROJECT NO.: 1018-0015 | |
| SUBMITTED: | DESIGNED BY: JAS |
| SCALE: N/A | DRAWN BY: KHL/PB |
| DATE: APRIL, 2026 | SHEET NO. C5 OF C10 |
| SURVEYED BY: | CITY DWG NO.: |