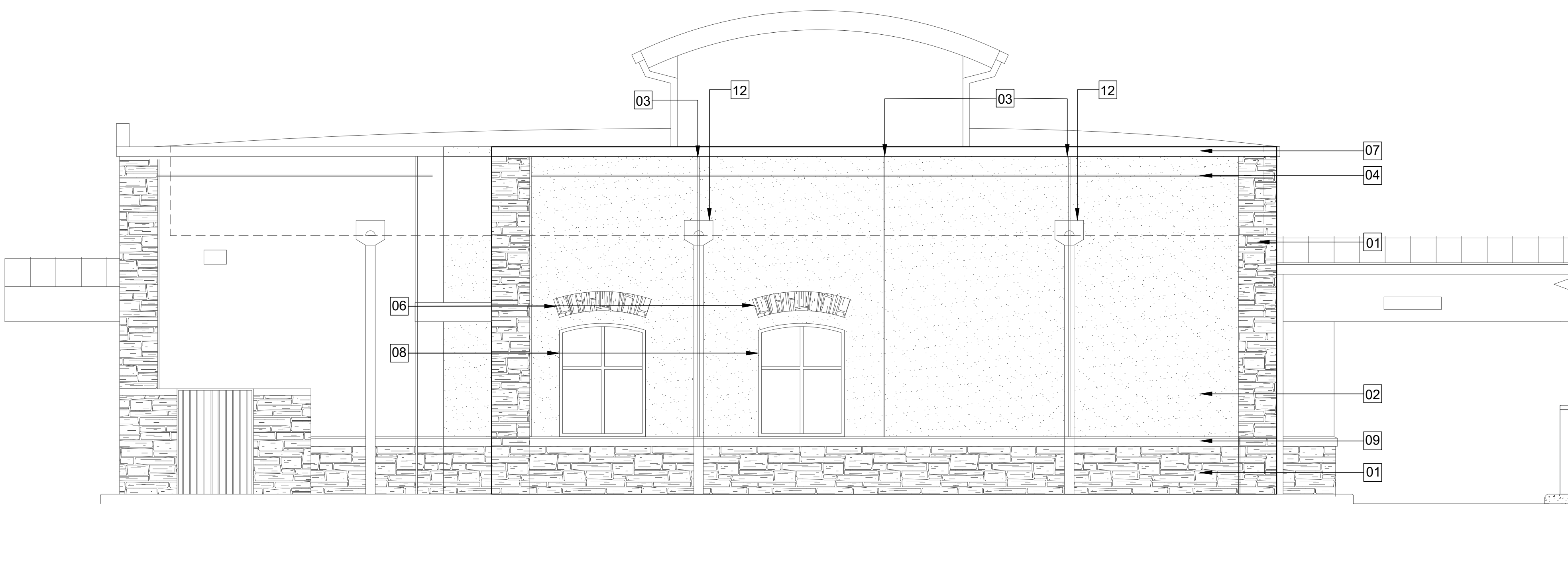




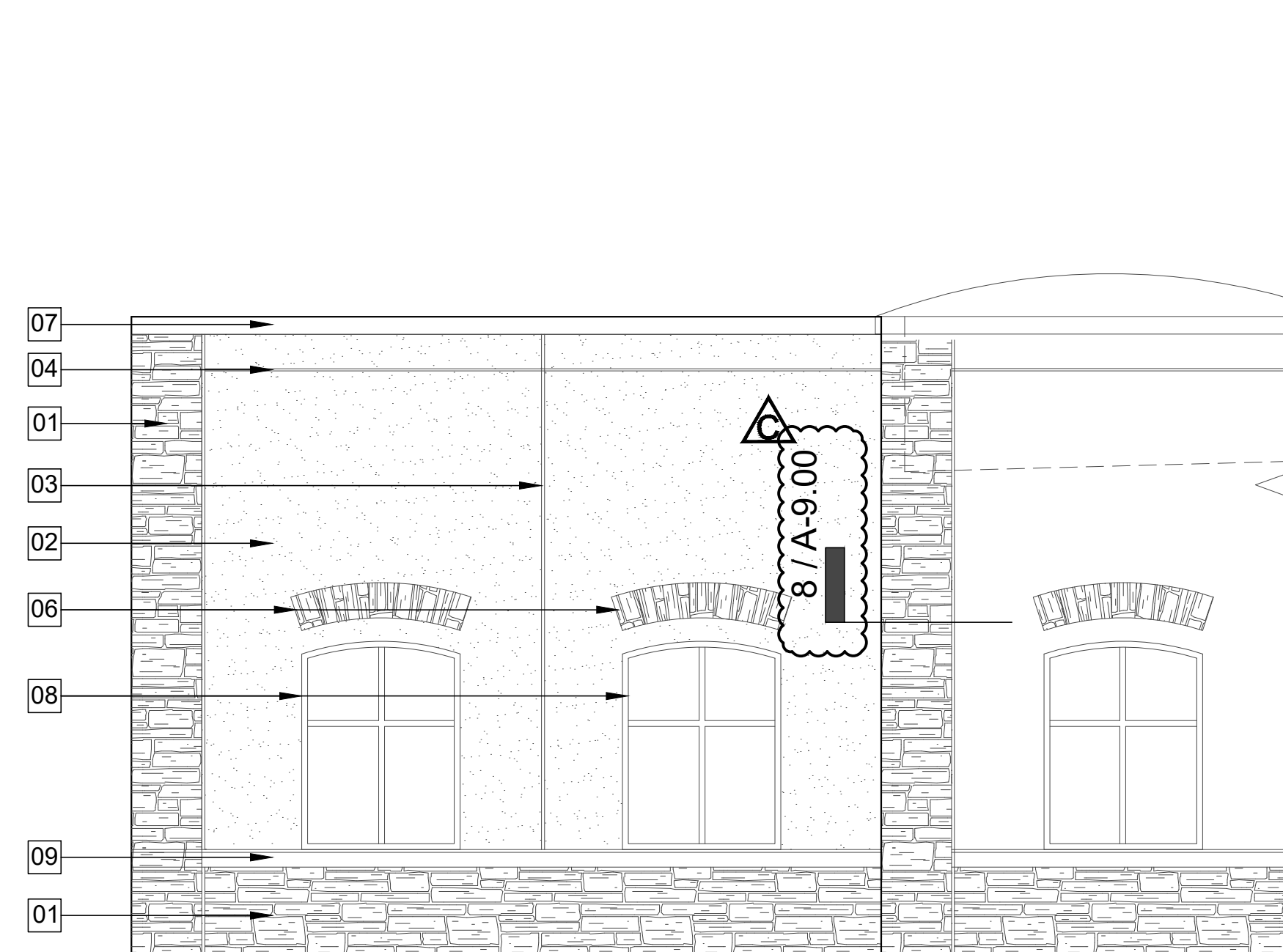
ARCHITECTURE PLANNING INTERIOR DESIGN
 15810 PARK TEN PLACE, SUITE 300
 HOUSTON, TEXAS 77084
 713-465-4650
 www.sligroup.com

NECHES LUMBERTON OFFICE ADDITION
 299 Country Lane at U.S. 69
 Lumberton, Texas 77657

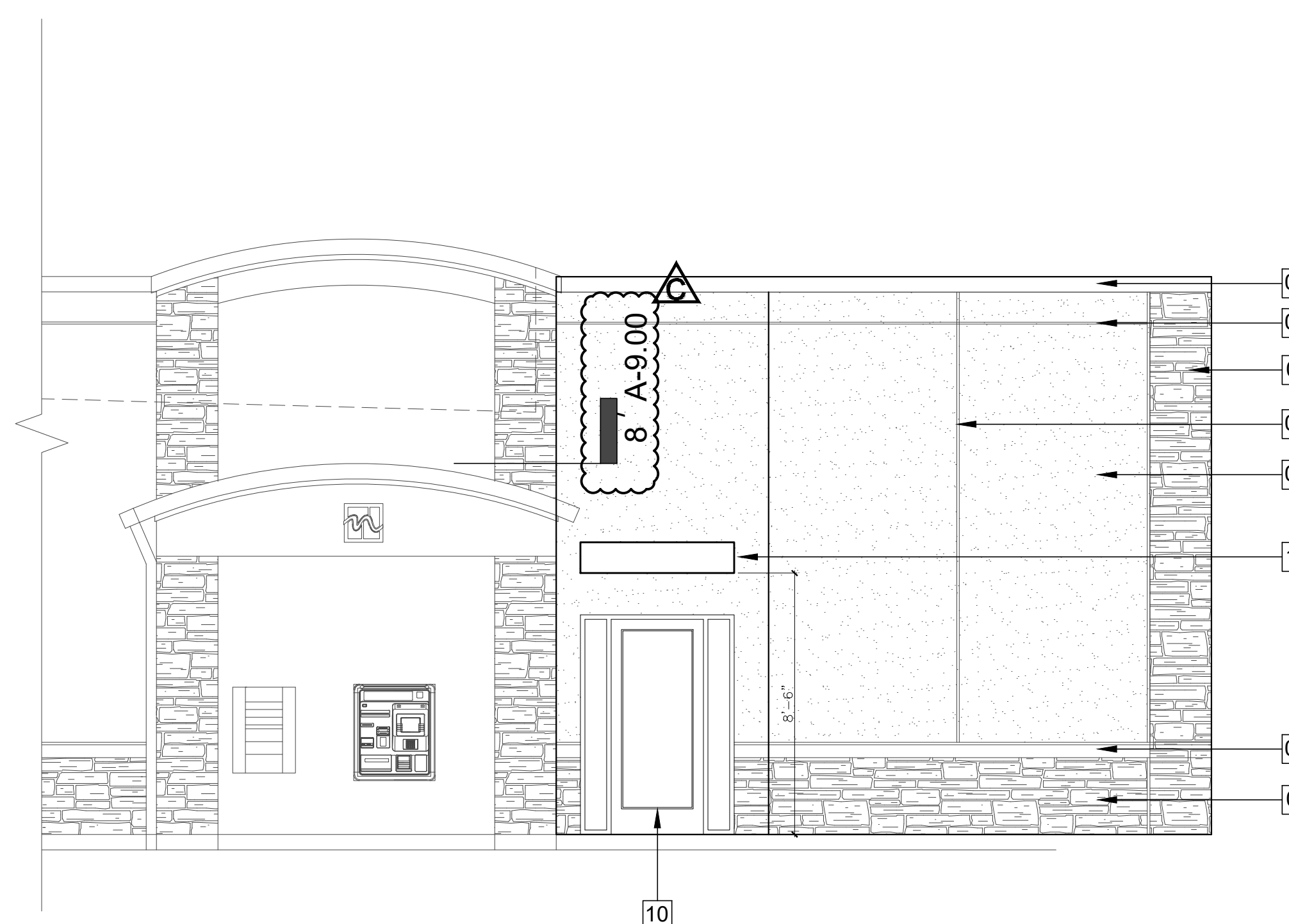
PROJECT NUMBER: 8983



03 REAR ADDITION ELEVATION
 SCALE: 1/4" = 1'-0"



02 SIDE ADDITION ELEVATION
 SCALE: 1/4" = 1'-0"



01 SIDE ADDITION ELEVATION
 SCALE: 1/4" = 1'-0"

EXTERIOR FINISHES	
STONE VENEER	COOPER STONE "CORDOVA CREAM" VENEER STONE
METAL CANOPY COLOR	BERRIDGE "ROYAL BLUE"
CAST STONE	THE ARK "LIGHT BUFF"
STOREFRONT FRAMES	CLEAR ANODIZED ALUMINUM
BOXES/DOWNSPOUTS	SENOX "CLAY" (TO MATCH STUCCO)
PARAPET COPING	SENOX "RAFFIA BEIGE" OR MATCH SW 6148 "WOOL SKEIN"
STUCCO	SHERWIN WILLIAMS SW 7038 "TONY TAUPE"

KEY NOTES BY SYMBOL ☒ :

- 01 STONE VENEER. MATCH EXISTING.
- 02 STUCCO FINISH. MATCH EXISTING.
- 03 STUCCO CONTROL JOINTS. MATCH EXISTING.
- 04 3/4" REVEAL FOR LED "LIGHT TAPE" MATCH EXISTING.
- 05 STONE VENEER. MATCH EXISTING.
- 06 12" HIGH STONE VENEER HEADER 8" ABOVE WINDOW, TYPICAL AT ALL 7 ARCHED WINDOWS. MATCH EXISTING.
- 07 PRE-FINISHED ALUMINUM 6" COPING CAP. MATCH EXISTING.
- 08 ALUMINUM/GLASS WINDOW, FRAME MATCH EXISTING. RE: SHEET A-2.0
- 09 CAST STONE WATER TABLE
- 10 RELOCATED ALUMINUM/GLASS STOREFRONT DOOR, SIDELIGHTS, FRAME
- 11 6'W X 4' D STRAIGHT ALUMINUM CANOPY ABOVE REAR ENTRY DOOR
- 12 PRE-FINISHED ALUMINUM COLLECTOR BOXES W/ OVERFLOW SCUPPERS AND 6" X 6" DOWNSPOUTS ROUTE TO UNDERGROUND STORM SEWER DRAINAGE SYSTEM

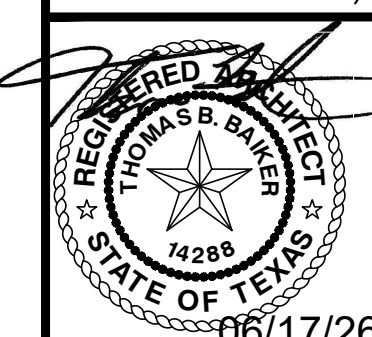
NOTE:
 ALL EXTERIOR FINISH MATERIALS SHALL MATCH EXISTING

ISSUED FOR CLIENT APPROVAL	DATE
ISSUED FOR BIDDING	04.30.26
ISSUED FOR PERMIT	04.30.26
ISSUED FOR CONSTRUCTION	

REVISIONS		
MARK	DESCRIPTION	DATE
A	ADDENDUM C	06.17.26

The information, ideas, designs, details, layouts, techniques, features, arrangements, plans, sequences, dimensions, allowances, tolerances, conceptions, specifications, intentions, technology or embodiments, as illustrated, arranged, displayed, noted, recorded, indicated, represented, disclosed, evidenced, detailed or otherwise reduced to tangible form hereon, either expressly, inherently or by implication, are the confidential and proprietary information of SLI Design, Inc., and shall not be used for any purpose other than the specific project or undertaking identified on the drawing title block or legend for which they are and have been prepared by SLI Design, Inc. Any other reproduction, disclosure or use of any portion of the confidential and proprietary information of SLI Design, Inc., shall be a breach of the obligation of confidence created by the acceptance of this drawing from SLI Design, Inc. for a specific project or Contract. Any copying, duplicating, reproducing, utilizing, alteration, modification, revision or change to this drawing, is expressly prohibited unless done with the prior written consent or approval of SLI Design, Inc., and shall not be undertaken without receipt of such prior written approval. This drawing is loaned by SLI Design, Inc., for the limited purpose of complying with a specific Contract. The drawing remains the property of SLI Design, Inc., and shall be returned upon request or completion of the contract, unless specifically authorized by Contract, under which it was loaned.

PRINT DATE Jun 17, 2026 - 4:22pm



DRAWING TITLE BUILDING ELEVATIONS	
DRAWN BY RG	SHEET NO. A-6.00
CHECKED BY BL	
APPROVED BY TB	