



ARCHITECTURE PLANNING INTERIOR DESIGN
 15810 PARK TEN PLACE, SUITE 300
 HOUSTON, TEXAS 77084
 713-465-4650
 www.sligroup.com



NECHES LUMBERTON DRIVE-THRU REMODEL
 299 Country Lane at U.S. 69
 Lumberton, Texas 77657

PROJECT NUMBER:

ISSUED FOR CLIENT APPROVAL	DATE
ISSUED FOR BIDDING	05/22/2026
ISSUED FOR PERMIT	05/22/2026
ISSUED FOR CONSTRUCTION	

REVISIONS		
MARK	DESCRIPTION	DATE
A	ADDENDUM B	05/22/2026

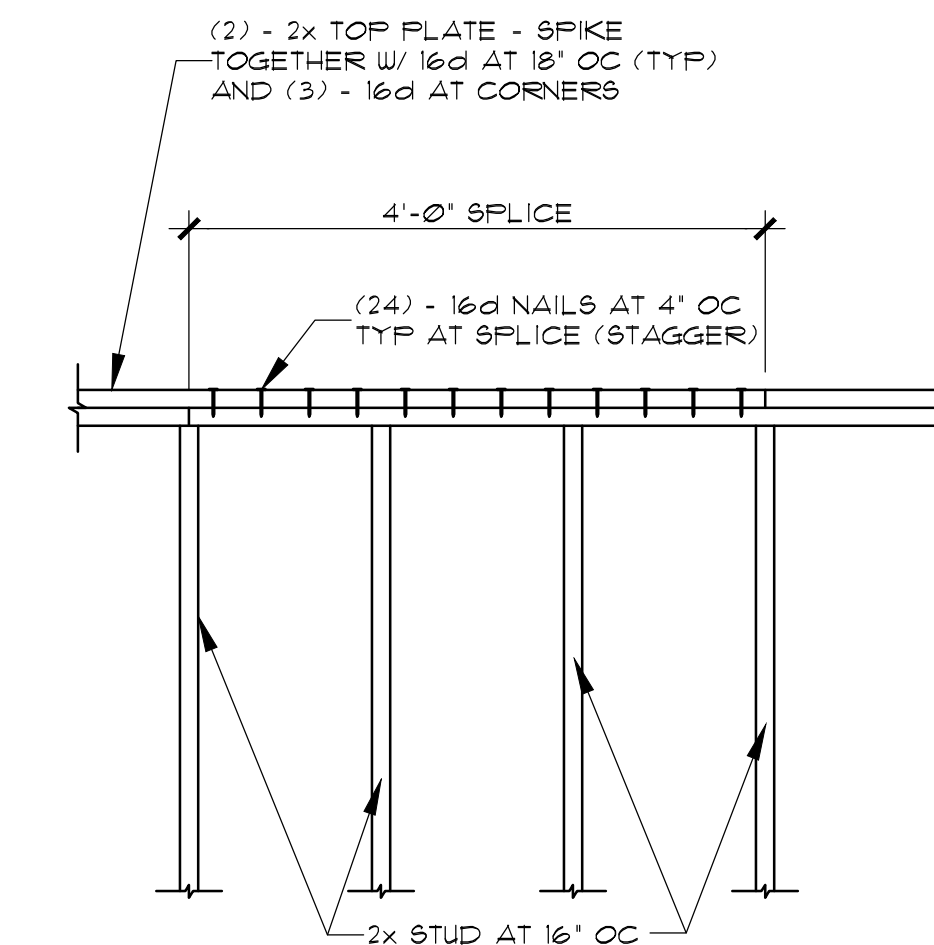
CJG Engineers
 Texas Engineering Firm Reg. No. F-170
 6051 North Course Dr Ste 375
 Houston, Texas 77072
 713.780.3345

The information, ideas, designs, details, layouts, techniques, features, arrangements, plans, sequences, dimensions, allowances, tolerances, conceptions, specifications, intentions, technology or embodiments, as illustrated, arranged, displayed, noted, recorded, indicated, represented, disclosed, evidenced, detailed or otherwise reduced to tangible form hereon, either expressly, inherently or by implication, are the confidential and proprietary information of SLI Design, Inc. and shall not be used for any purpose other than the specific project or undertaking identified on the drawing title block or legend for which they are and have been prepared by SLI Design, Inc. Any other reproduction, disclosure or use of any portion of the confidential and proprietary information of SLI Design, Inc. shall be a breach of the obligation of confidence created by the acceptance of this drawing from SLI Design, Inc. for a specific project or Contract. Any copying, duplicating, reproducing, utilizing, alteration, modification, revision or change to this drawing is expressly prohibited unless done with the prior written consent or approval of SLI Design, Inc. and shall not be undertaken without receipt of such prior written approval. This drawing is loaned by SLI Design, Inc. for the limited purpose of complying with a specific Contract. The drawing remains the property of SLI Design, Inc. and shall be returned upon request or completion of the contract, unless specifically authorized by Contract, under which it was loaned.

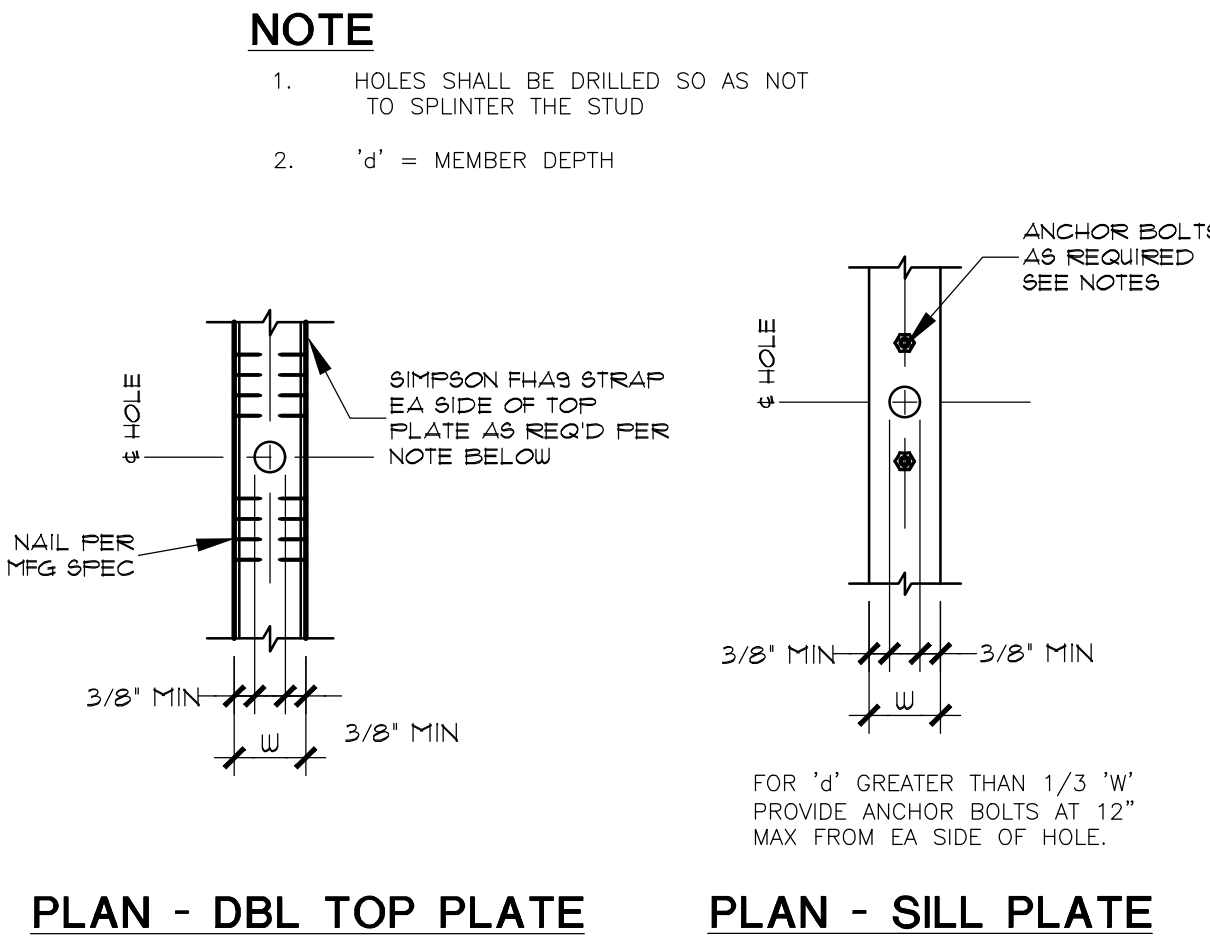
PRINT DATE

DRAWING TITLE FRAMING DETAILS	
DRAWN BY AD	SHEET NO. S4.02
CHECKED BY BG	
APPROVED BY BG	

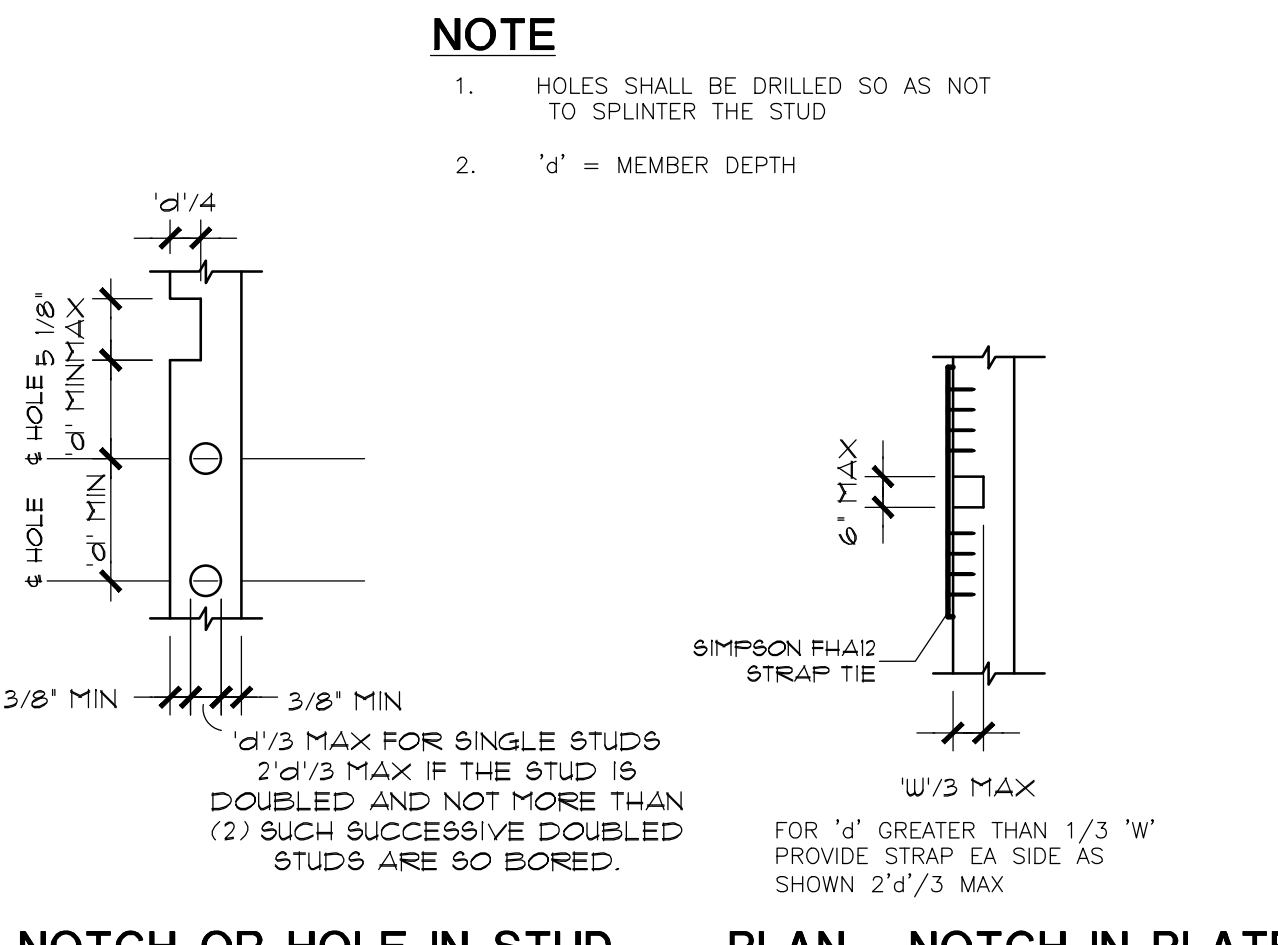
3 DETAIL
SCALE: 3/4" = 1'-0"



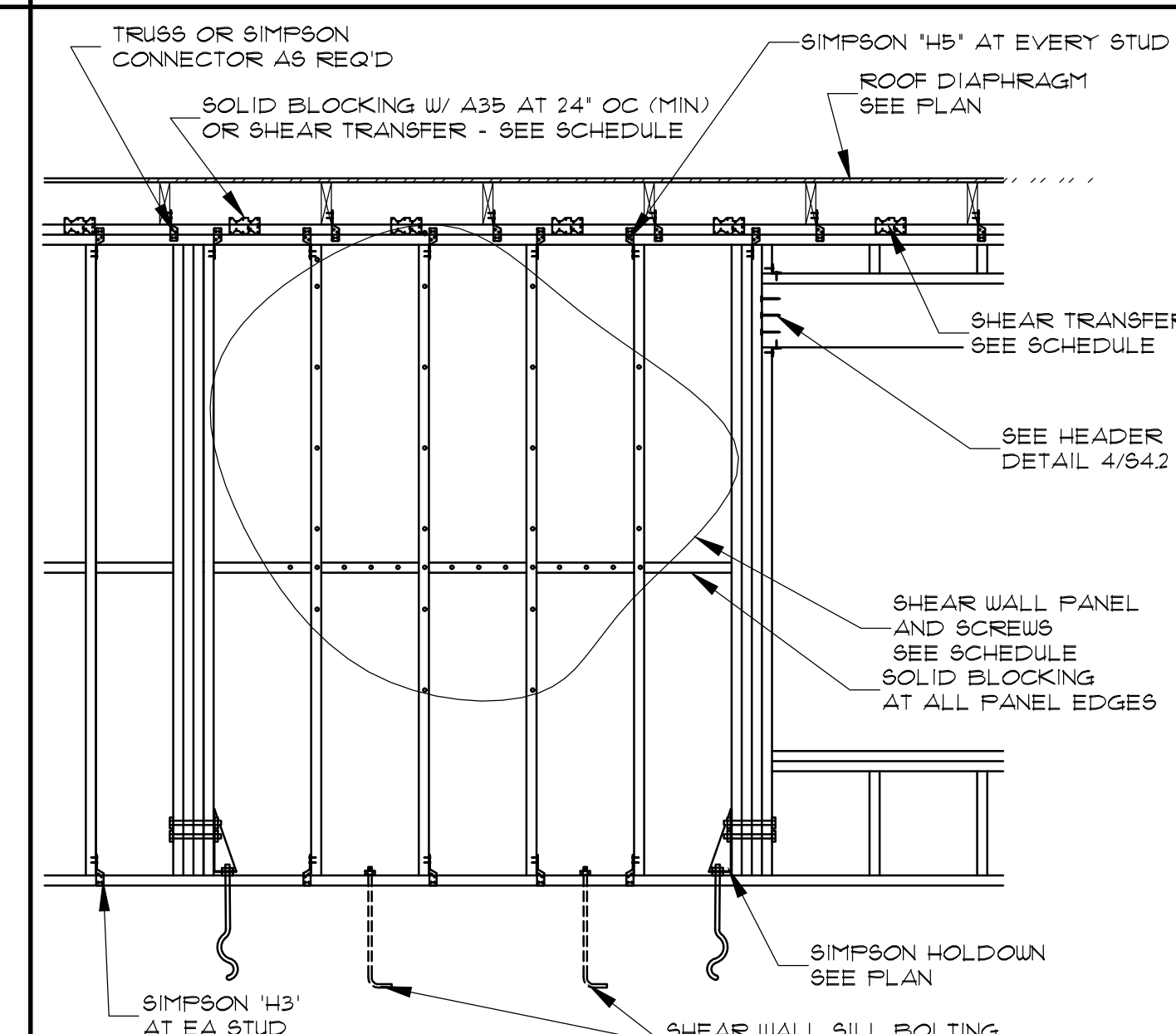
2 TOP PLATE SPLICE DETAIL
SCALE: 3/4" = 1'-0"



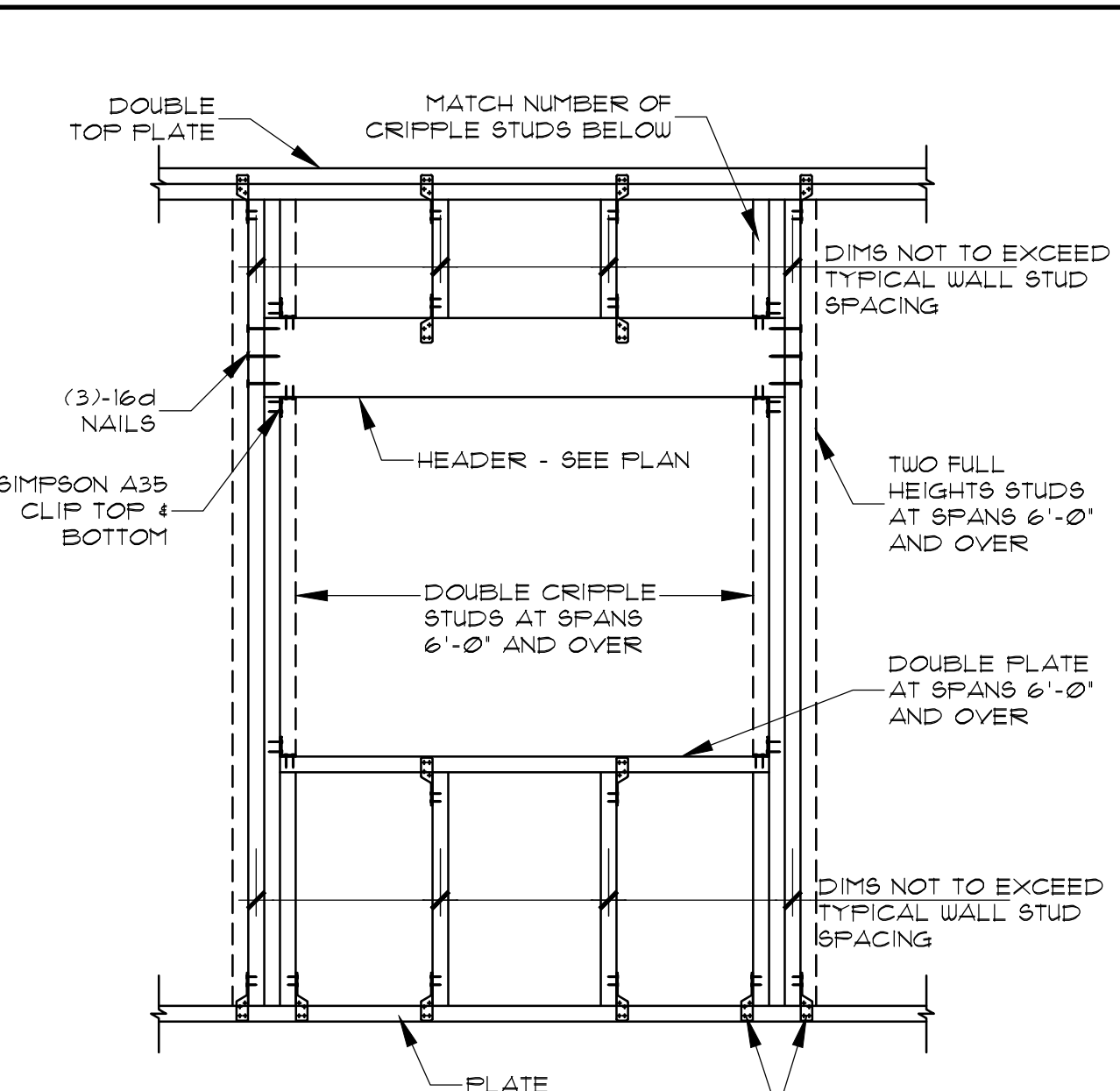
6 HOLES IN PLATE
SCALE: 3/4" = 1'-0"



5 HOLE/NOTCH IN STUD/PLATE
SCALE: 3/4" = 1'-0"



1 SHEAR WALL ELEVATION
SCALE: T.S.



4 HEADER DETAIL
SCALE: T.S.

9 DETAIL
SCALE: 3/4" = 1'-0"

ROOF TRUSS UPLIFT ANCHOR SCHEDULE		
SIMPSON ANCHORS	ROOF TRUSS UPLIFT LOAD	REMARKS
H5	LOADS LESS THAN 455#	
H7 OR H10	LOADS LESS THAN 905#	WHERE STUD ALIGNS WITH TRUSS
M7S12	LOADS LESS THAN 1000#	OR GREATER SIZE AS REQ'D FOR INSTALLATION
H15	LOADS LESS THAN 1300#	12-10d TO STUD
MT28B	LOADS LESS THAN 4455# (2-PLY) LOADS LESS THAN 3465# (1-PLY)	24-16d NAILS 24-10d NAILS (TWO REQ'D)
THA218-2	LOADS LESS THAN 1550#	TWO PLY TRUSS
LIT20B	LOADS LESS THAN 1750#	TWO PLY TRUSS 10-16d NAILS (TWO REQ'D)
2-HDBA OR 4-HDBA	6465#	TWO PLY TRUSS
2-HDBA	3705#	ONE PLY TRUSS

8 UPLIFT ANCHOR SCHEDULE
SCALE: T.S.

JOIST (BEAM OR TRUSS) HANGER SCHEDULE		
2x6	LUS26	
2x8	LUS26	
2x10	LUS28	
2x12	LUS210	
(2)-2x6	HUS26-2TF	
(2)-2x8	HUS28-2TF	
(2)-2x10	HUS210-2TF	
(2)-2x12	HUS210-2TF	
(3)-2x10	HUS210-2TF	
(3)-2x12	HU212-3TF	
3 1/2 x 9 1/4 PARALLAM	HW 149.25	
5 1/4 x 9 1/4 PARALLAM	WP 5.31/9.25	
5 1/4 x 12 PARALLAM	HWU 5.50/12	
TRUSS TO TRUSS	AS SPECIFIED BY TRUSS ENGINEER	

7 HANGER SCHEDULE
SCALE: T.S.

PROVIDE HANGERS AT ALL LOCATIONS WHERE MEMBERS FRAME TOGETHER AT THE SAME ELEVATION (U.N.O.).
 SEE TIMBER GENERAL NOTES No. 19.
 WHERE WOOD BEAMS FRAME INTO STEEL COLUMNS, PROVIDE 1/4" PLATE SADDLE WITH BEARING PLATE WELDED TO COLUMN.
 PROVIDE SLOPED HANGERS WHERE REQUIRED.

12 DETAIL
SCALE: T.S.

11 DETAIL
SCALE: T.S.

10 DETAIL
SCALE: T.S.