

ISSUED FOR CLIENT APPROVAL	DATE
ISSUED FOR BIDDING	05/22/2026
ISSUED FOR PERMIT	05/22/2026
ISSUED FOR CONSTRUCTION	

REVISIONS		
MARK	DESCRIPTION	DATE
A	ADDENDUM B	05/22/2026

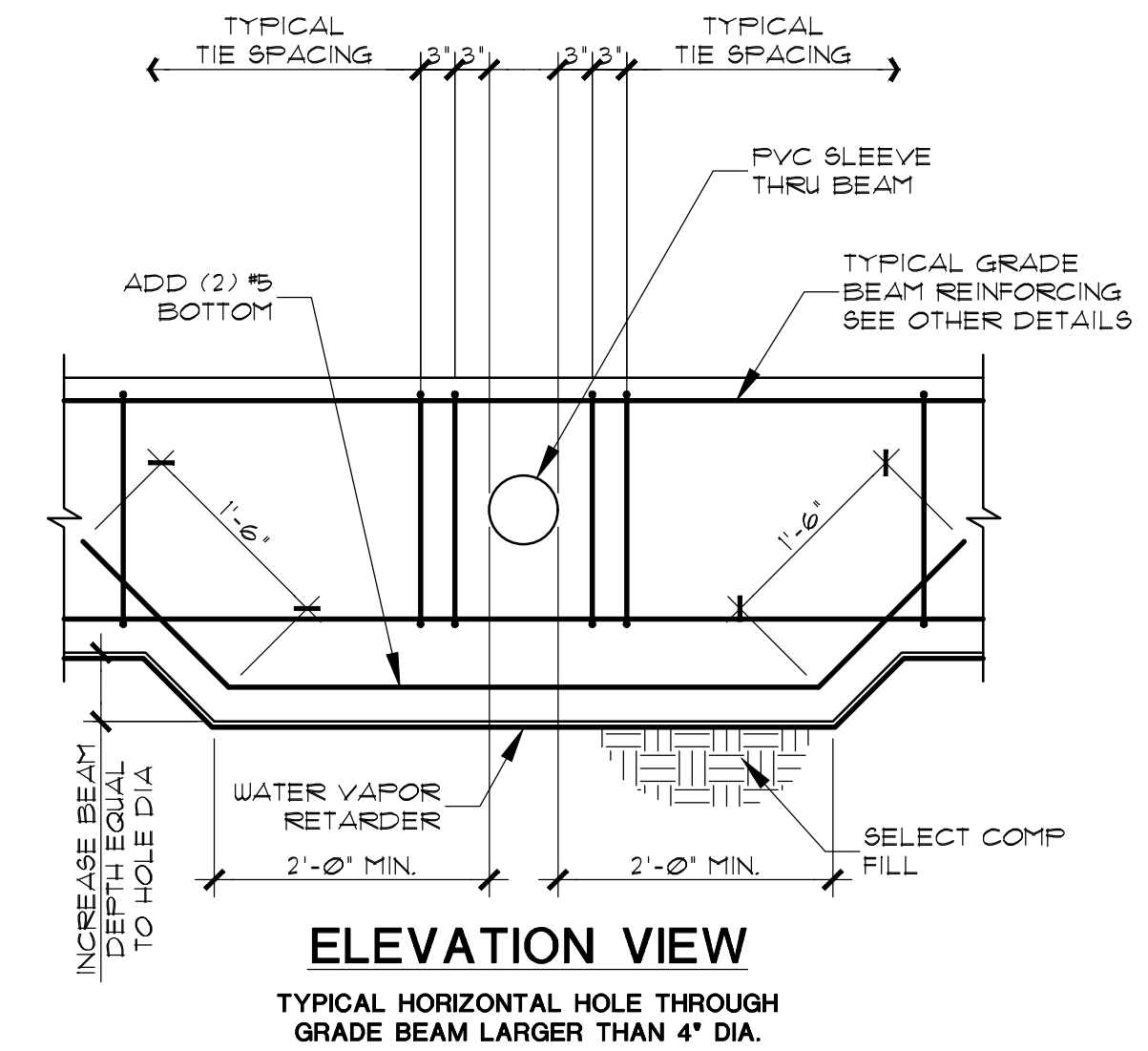
CJG Engineers
Texas Engineering
Firm Reg. No. F-170
6051 North Course Dr Ste 375
Houston, Texas 77072
713.780.3345

The information, ideas, designs, details, layouts, techniques, features, arrangements, plans, sequences, dimensions, allowances, tolerances, conceptions, specifications, intentions, technology or embodiments, as illustrated, arranged, displayed, noted, recorded, indicated, represented, disclosed, evidenced, detailed or otherwise related to tangible form hereon, either expressly, inherently or by implication, are the confidential and proprietary information of SLI Design, Inc. and shall not be used for any purpose other than the specific project or undertaking identified on the drawing title block or legend for which they are and have been prepared by SLI Design, Inc. Any other reproduction, disclosure or use of any portion of the confidential and proprietary information of SLI Design, Inc. shall be a breach of the obligation of confidence created by the acceptance of this drawing from SLI Design, Inc. for a specific project or Contract. Any copying, duplicating, reproducing, utilization, alteration, modification, revision or change to this drawing is expressly prohibited unless done with the prior written consent or approval of SLI Design, Inc. and shall not be undertaken without receipt of such prior written approval. This drawing is loaned by SLI Design, Inc. for the limited purpose of complying with a specific Contract. The drawing remains the property of SLI Design, Inc. and shall be returned upon request or completion of the contract, unless specifically authorized by Contract, under which it was loaned.

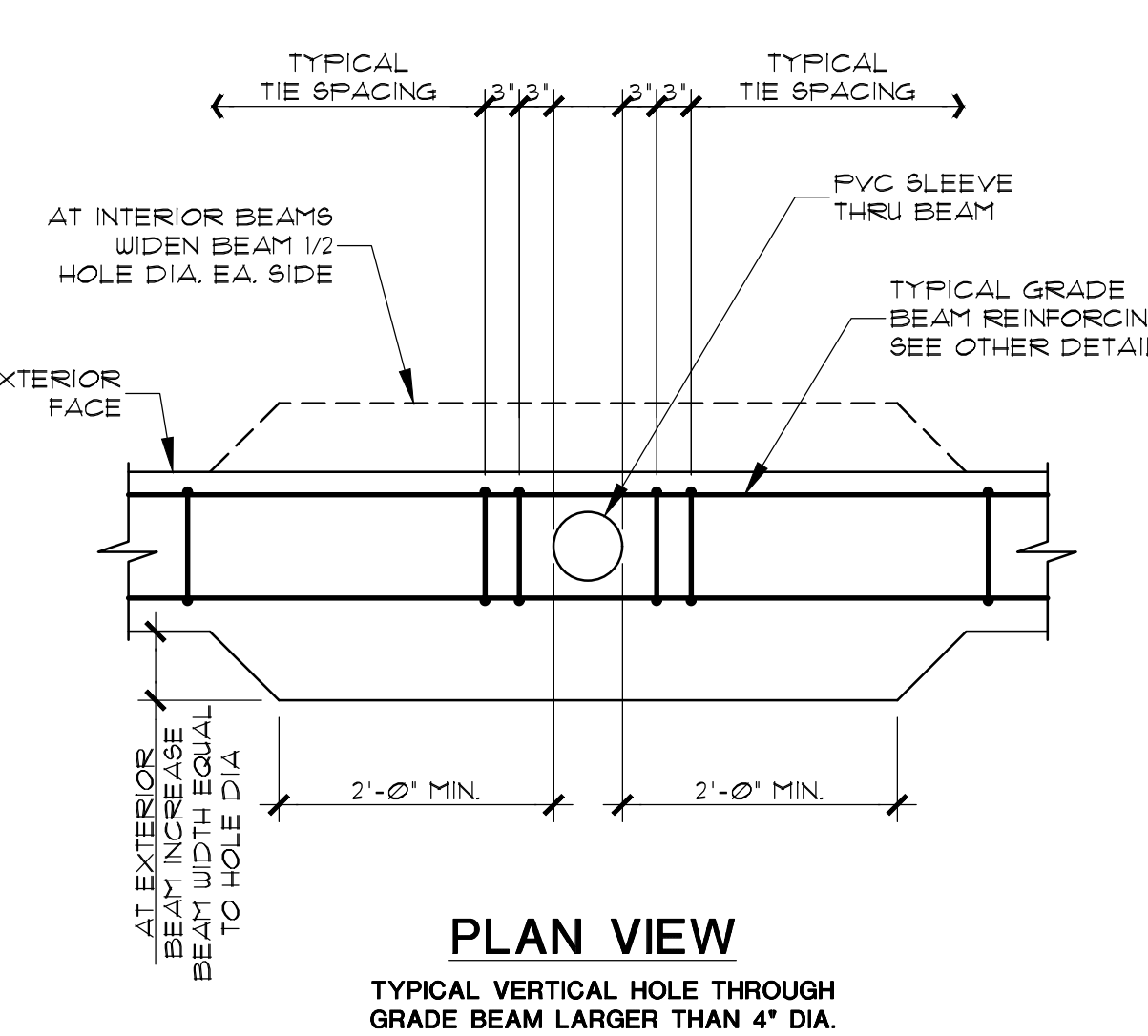
PRINT DATE

DRAWING TITLE
FOUNDATION DETAILS

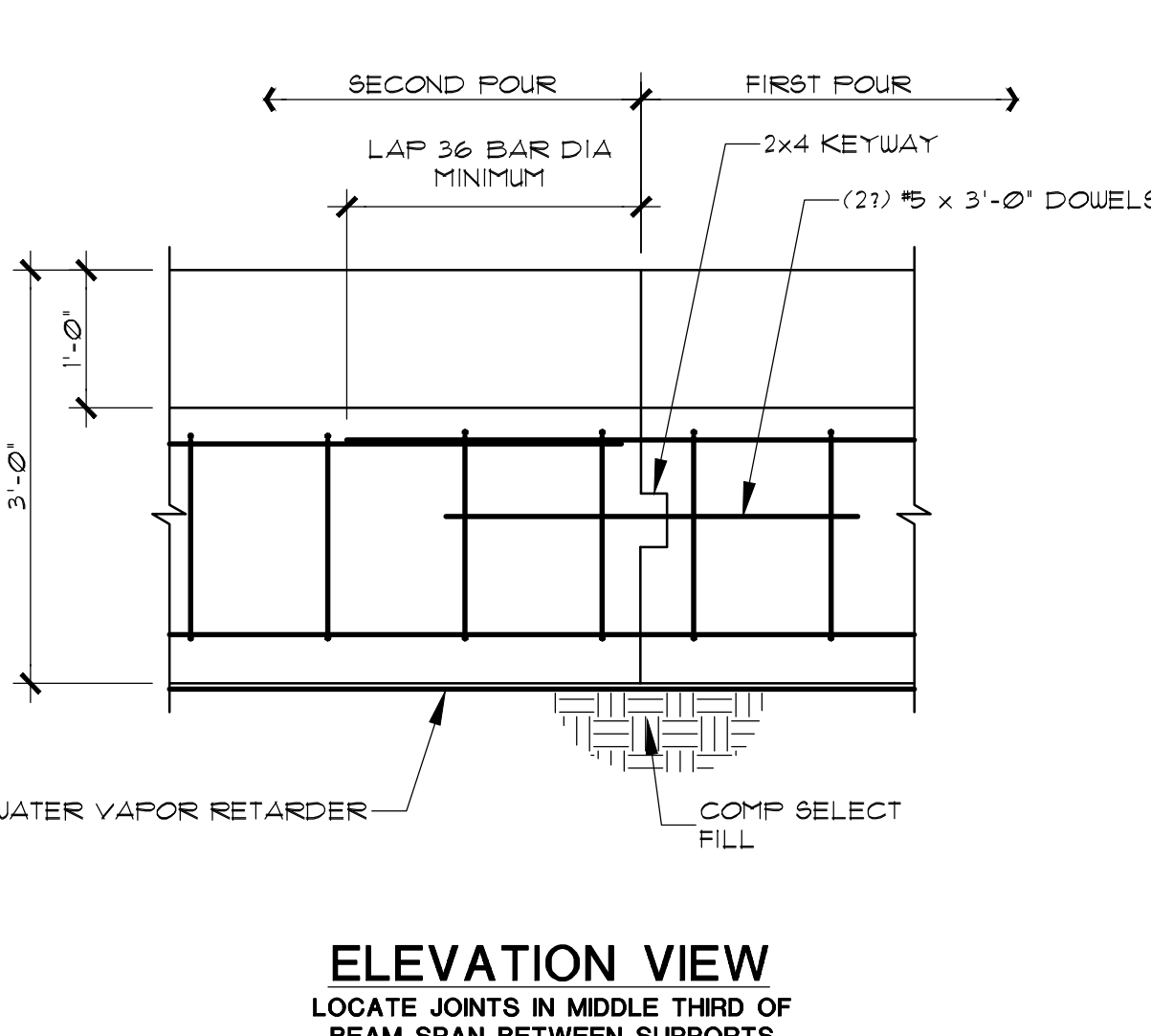
DRAWN BY	AD	SHEET NO.	S3.02
CHECKED BY	BG		
APPROVED BY	BG		



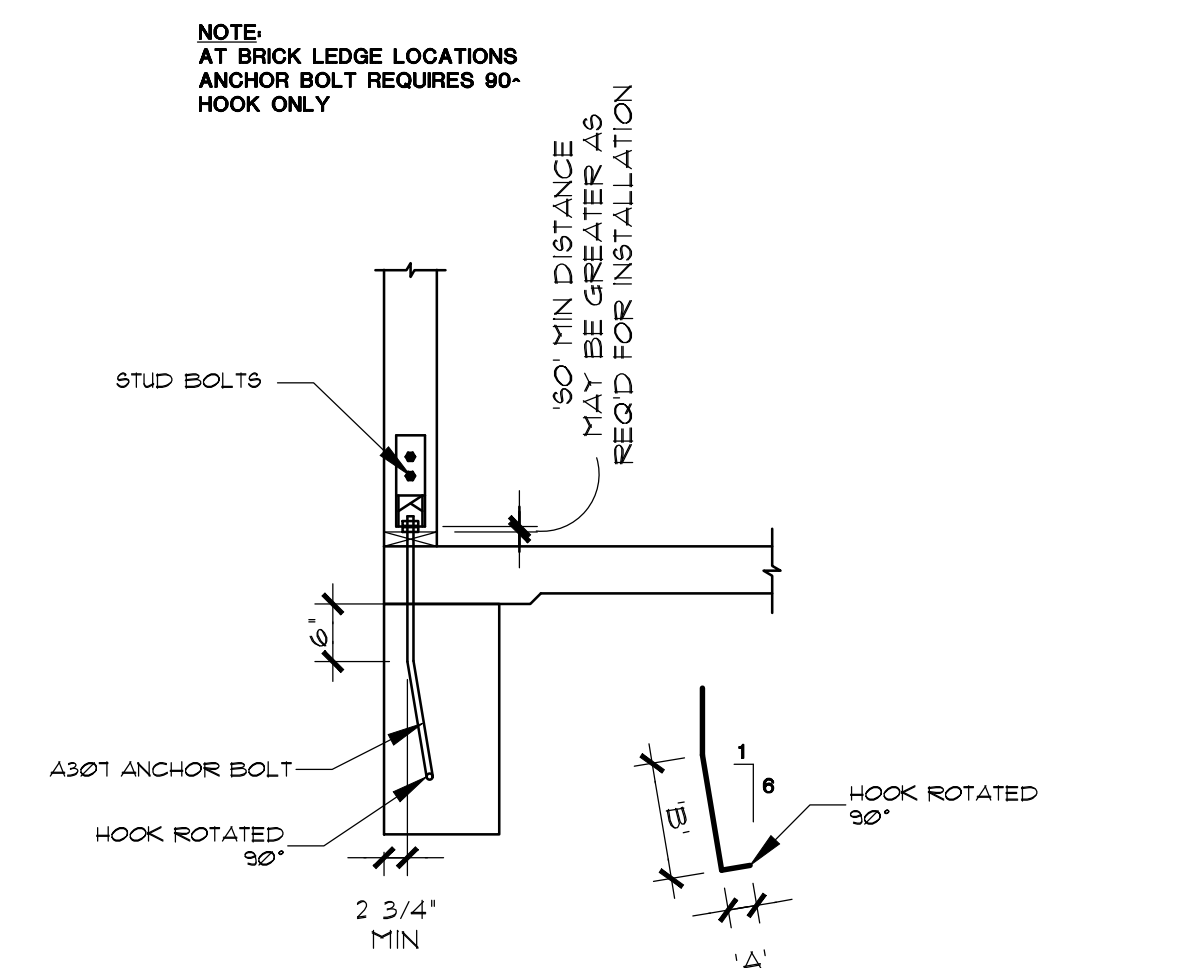
3 GRADE BEAM PENETRATION DETAIL
SCALE: 3/4" = 1'-0"



2 GRADE BEAM PENETRATION DETAIL
SCALE: 3/4" = 1'-0"



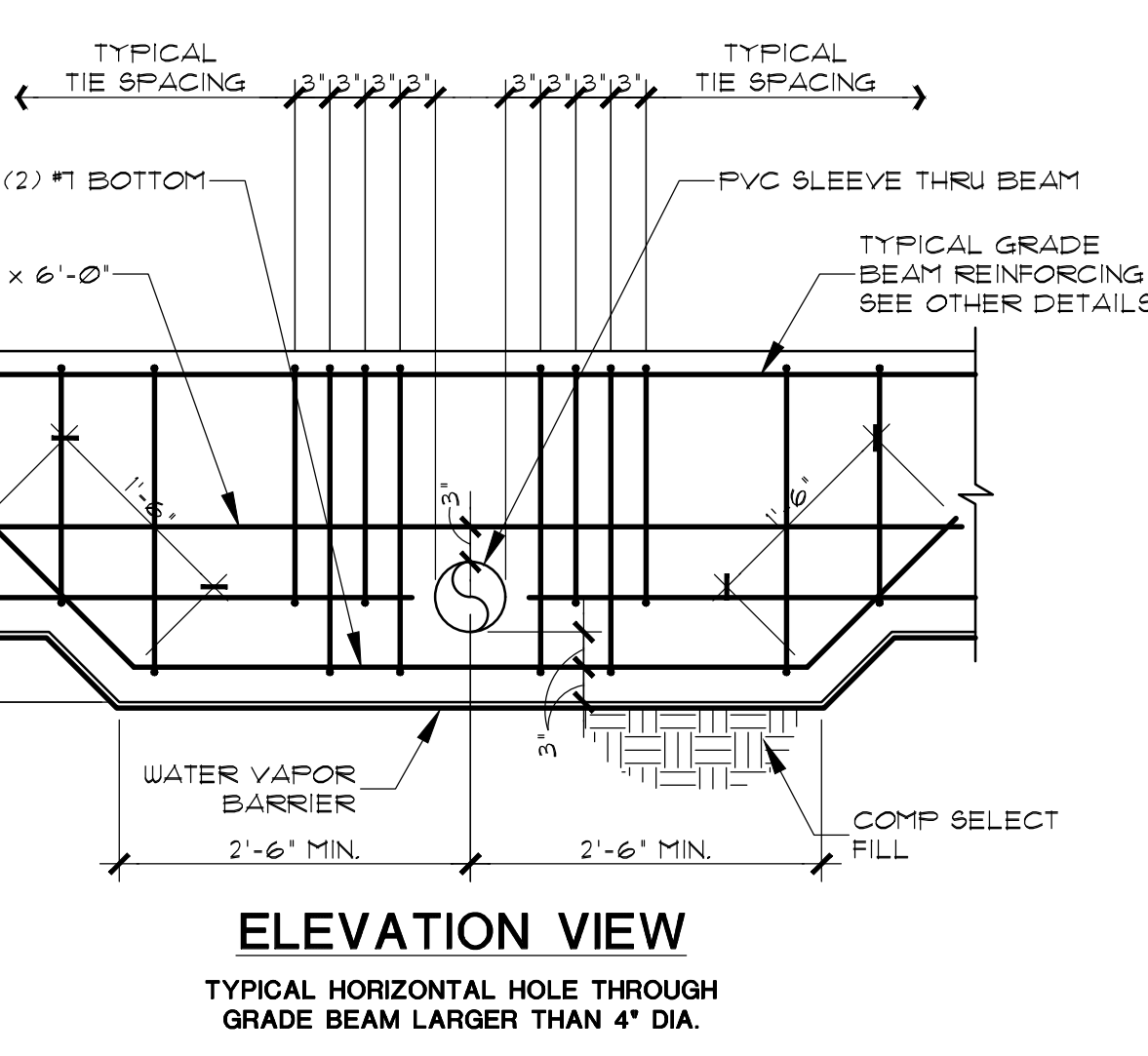
1 GRADE BEAM CONSTRUCTION JOINT
SCALE: 3/4" = 1'-0"



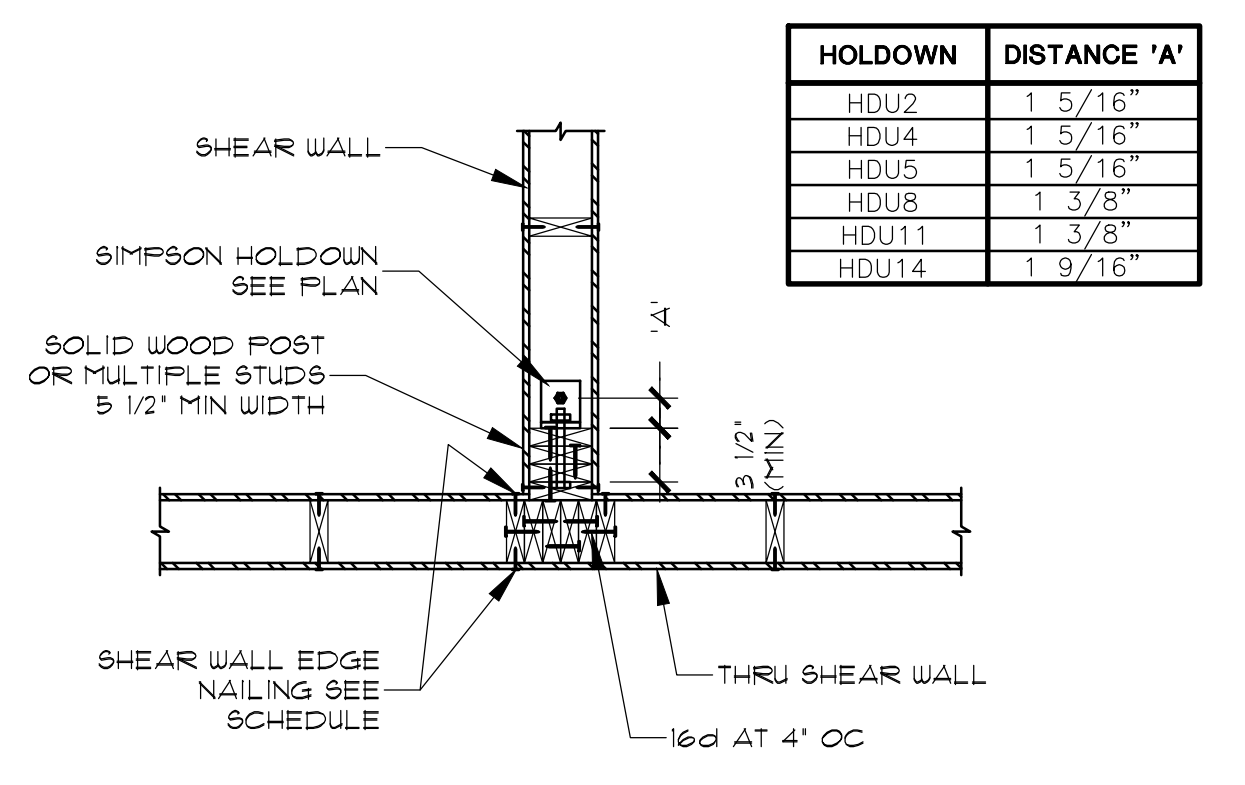
HOLDOWN	SDS SCREW	ANCHOR BOLT DIA	3000 PSI		'80'	SIMPSON ANCHOR BOLT
			A	B		
HDU2	(6)-SDS 1/4" x 2 1/2"	5/8"			3/8"	SSTB16
HDU4	(10)-SDS 1/4" x 2 1/2"	5/8"	4 1/2"	12"	1/2"	SSTB16
HDU5	(14)-SDS 1/4" x 2 1/2"	5/8"	4 1/2"	12"	9/16"	SSTB28
HDU8	(20)-SDS 1/4" x 2 1/2"	7/8"	4 1/2"	15"	9/16"	SSTB28
HDU11	(30)-SDS 1/4" x 2 1/2"	1"	4 1/2"	15"	9/16"	
HDU14	(36)-SDS 1/4" x 2 1/2"	1"	4 1/2"	15"	5/8"	

HOLDOWN	ALTERNATE ANCHOR BOLT
HDU2	5/8" x 5" EMBED HILTI HIT HY150 ADHESIVE ANCHOR W/ "HAS" ROD
HDU4	5/8" x 5" EMBED HILTI HIT HY150 ADHESIVE ANCHOR W/ "HAS" ROD
HDU5	5/8" x 7 1/2" EMBED HILTI HIT HY150 ADHESIVE ANCHOR W/ "HAS" ROD
HDU8	7/8" x 7 1/2" EMBED HILTI HIT HY150 ADHESIVE ANCHOR W/ "HAS" ROD
HDU11	1" x 11 1/4" EMBED HILTI HIT HY150 ADHESIVE ANCHOR W/ "HAS" ROD
HDU14	1" x 12 3/8" EMBED HILTI HIT HY150 ADHESIVE ANCHOR W/ "HAS" ROD

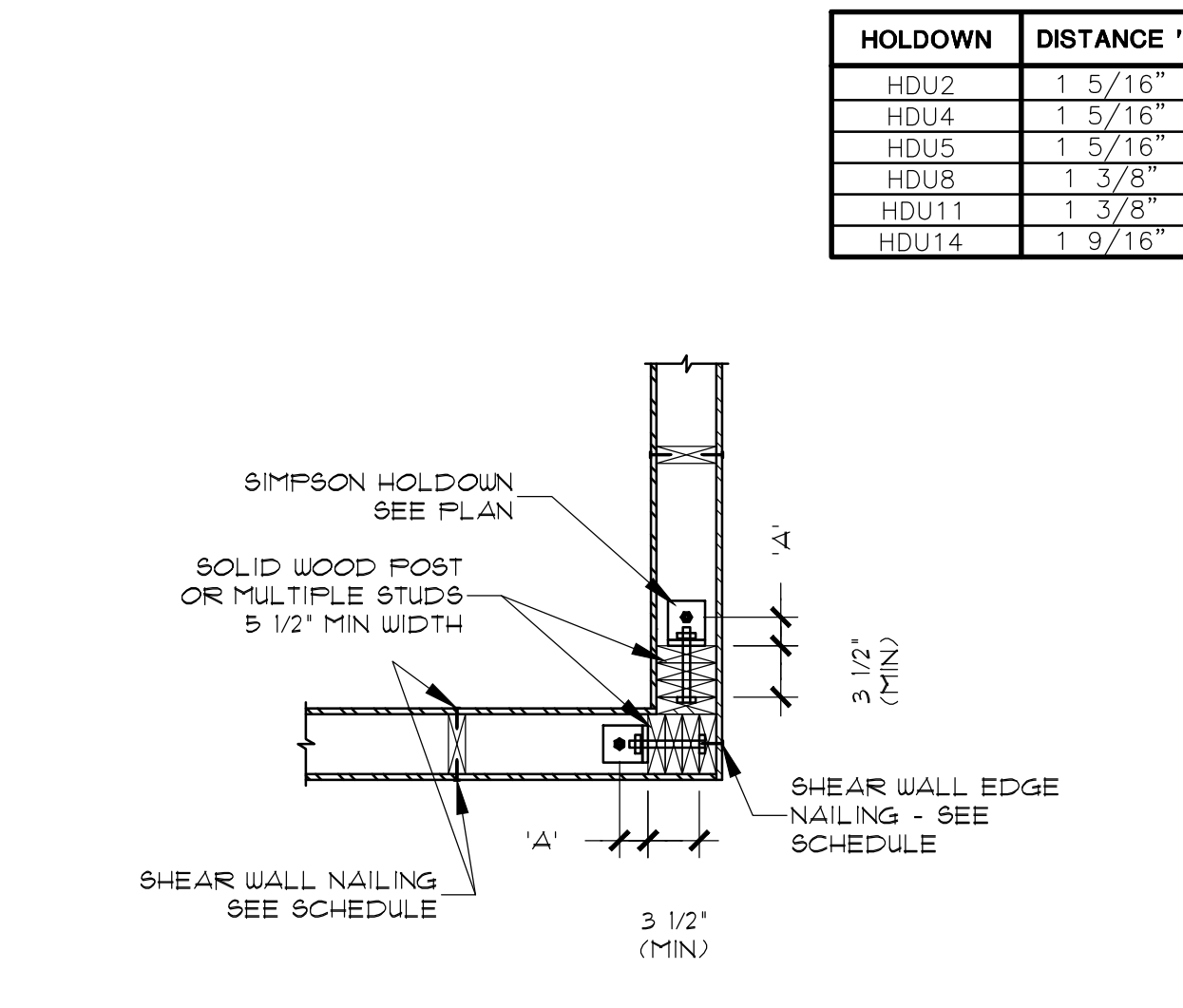
1 HOLDOWN ANCHOR SCHEDULE
SCALE: 3/4" = 1'-0"



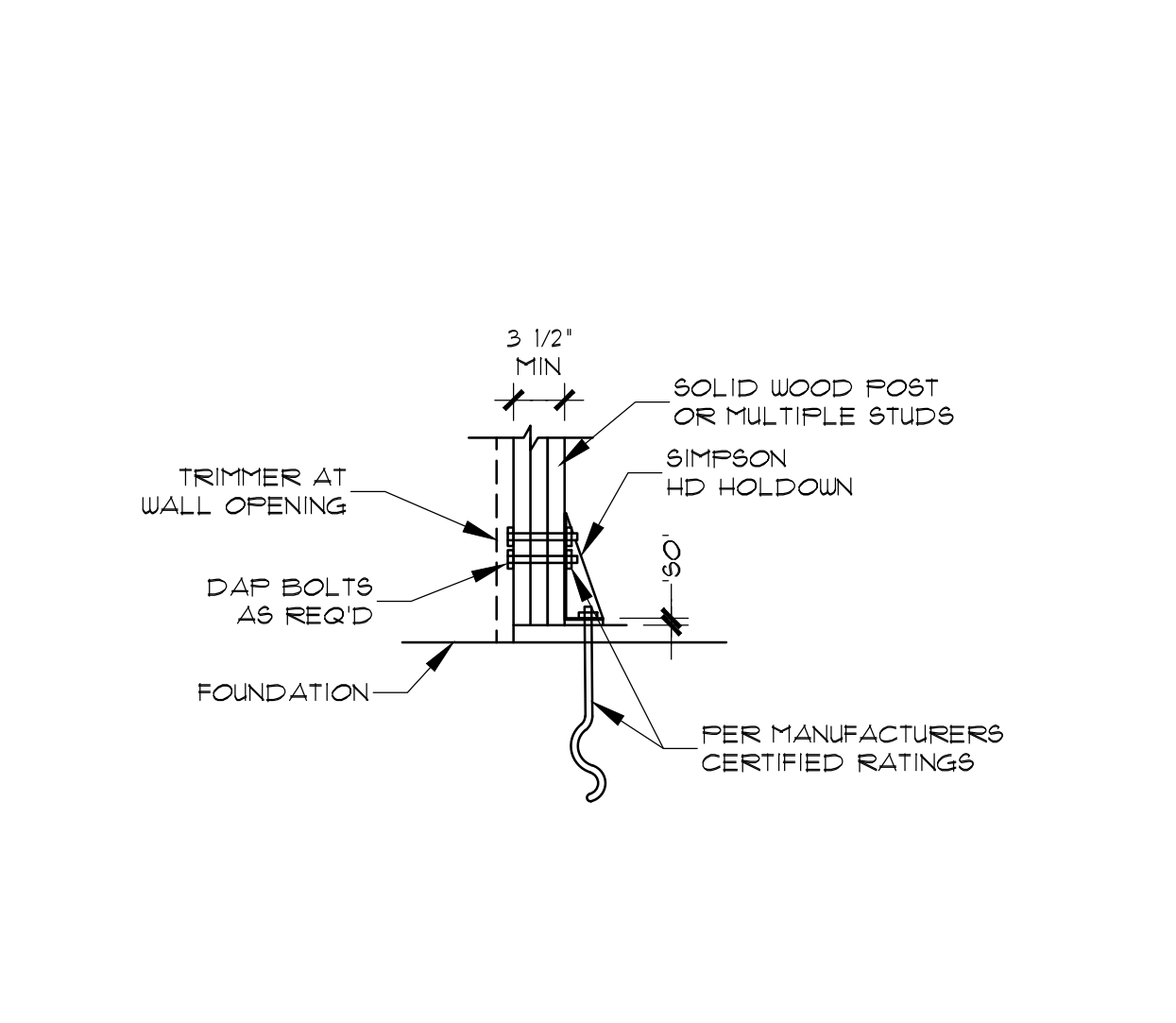
4 GRADE BEAM PENETRATION (MAIN REINF INTERRUPTED)
SCALE: 3/4" = 1'-0"



9 INTERSECTION HOLDOWN PLAN
SCALE: 3/4" = 1'-0"

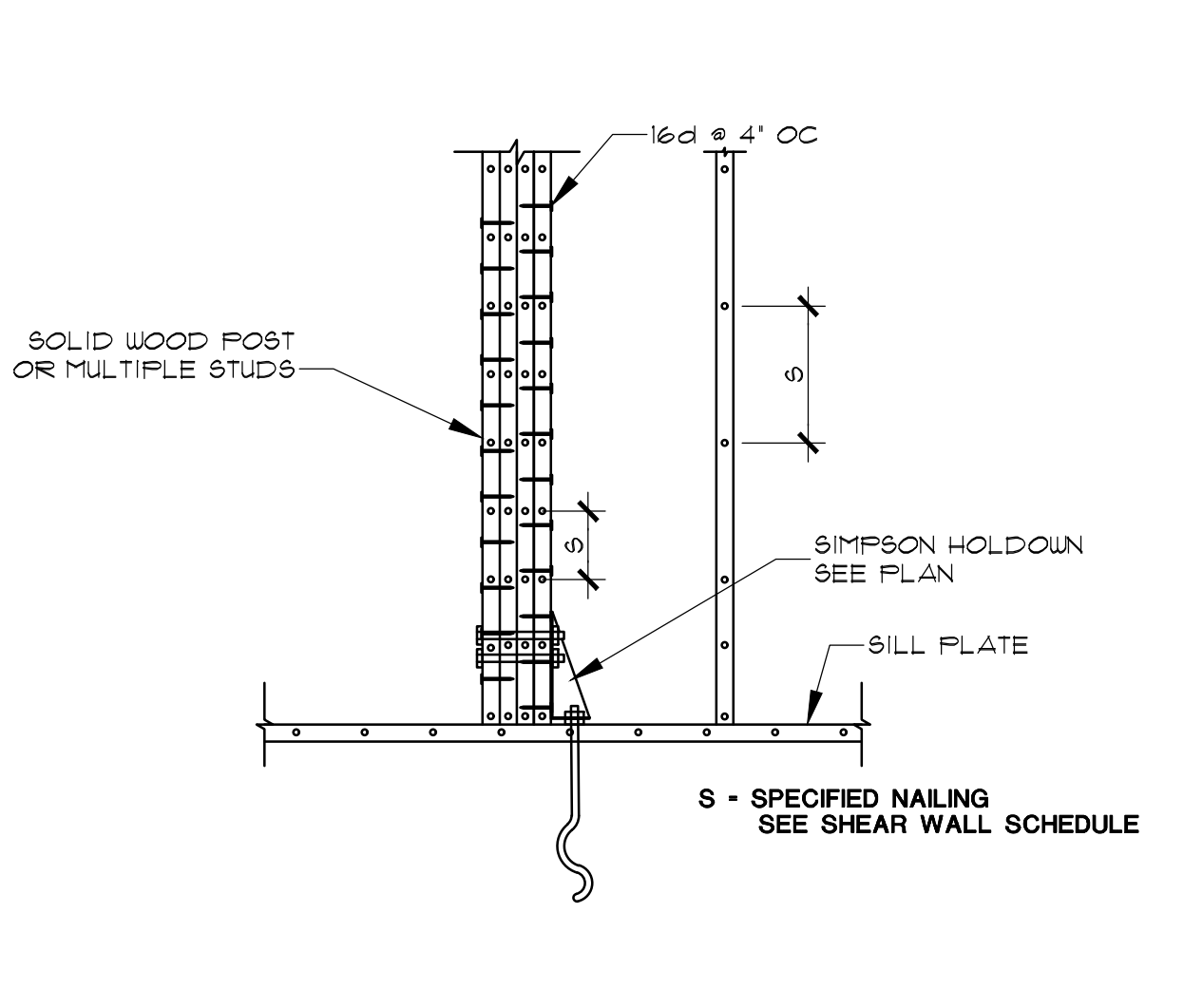


8 CORNER HOLDOWN PLAN
SCALE: 3/4" = 1'-0"

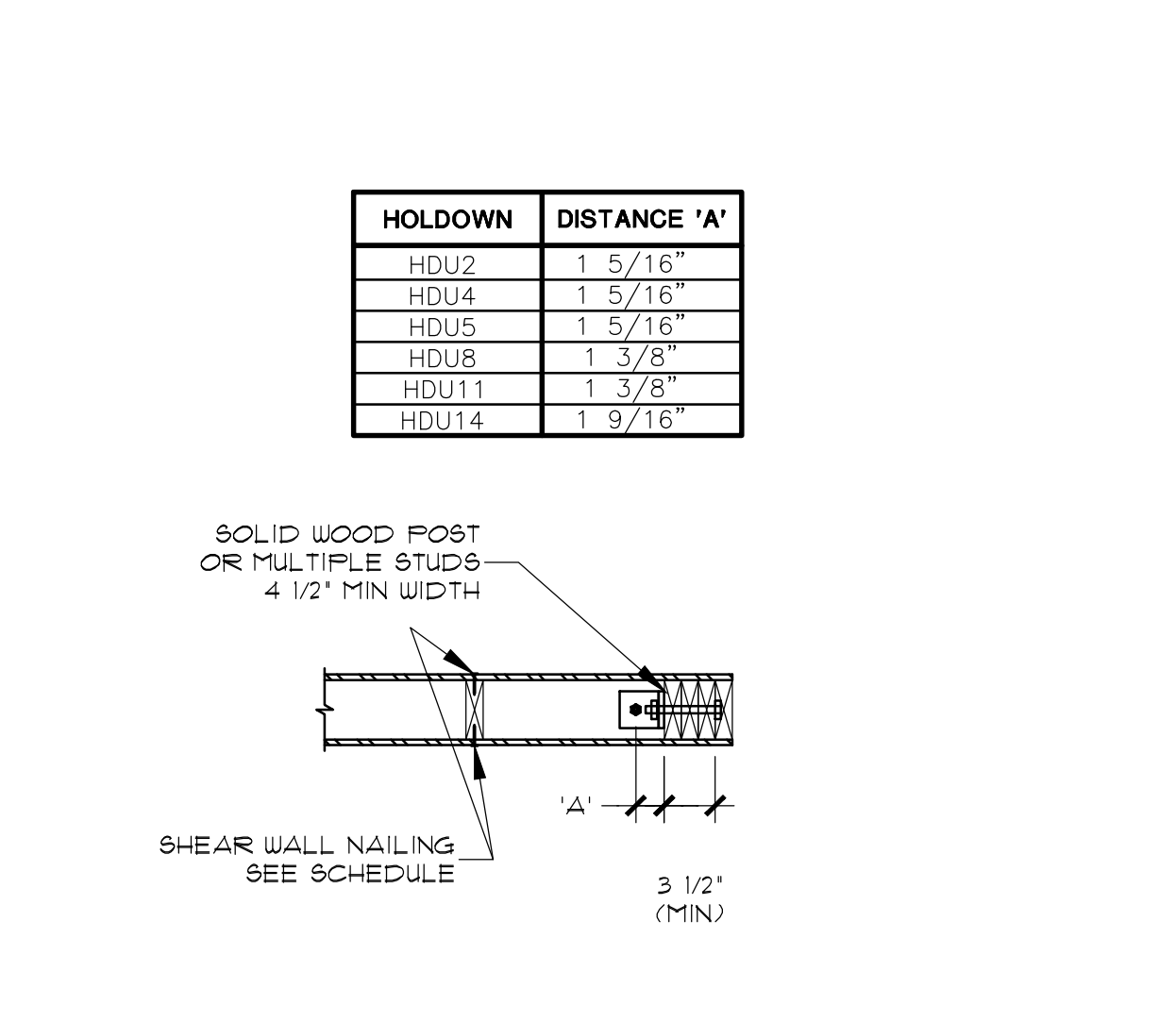


7 HOLDOWN DETAIL
SCALE: 3/4" = 1'-0"

12 DETAIL
SCALE: 3/4" = 1'-0"



11 HOLDOWN STUD NAILING
SCALE: 3/4" = 1'-0"



10 OPENING HOLDOWN PLAN
SCALE: 3/4" = 1'-0"