

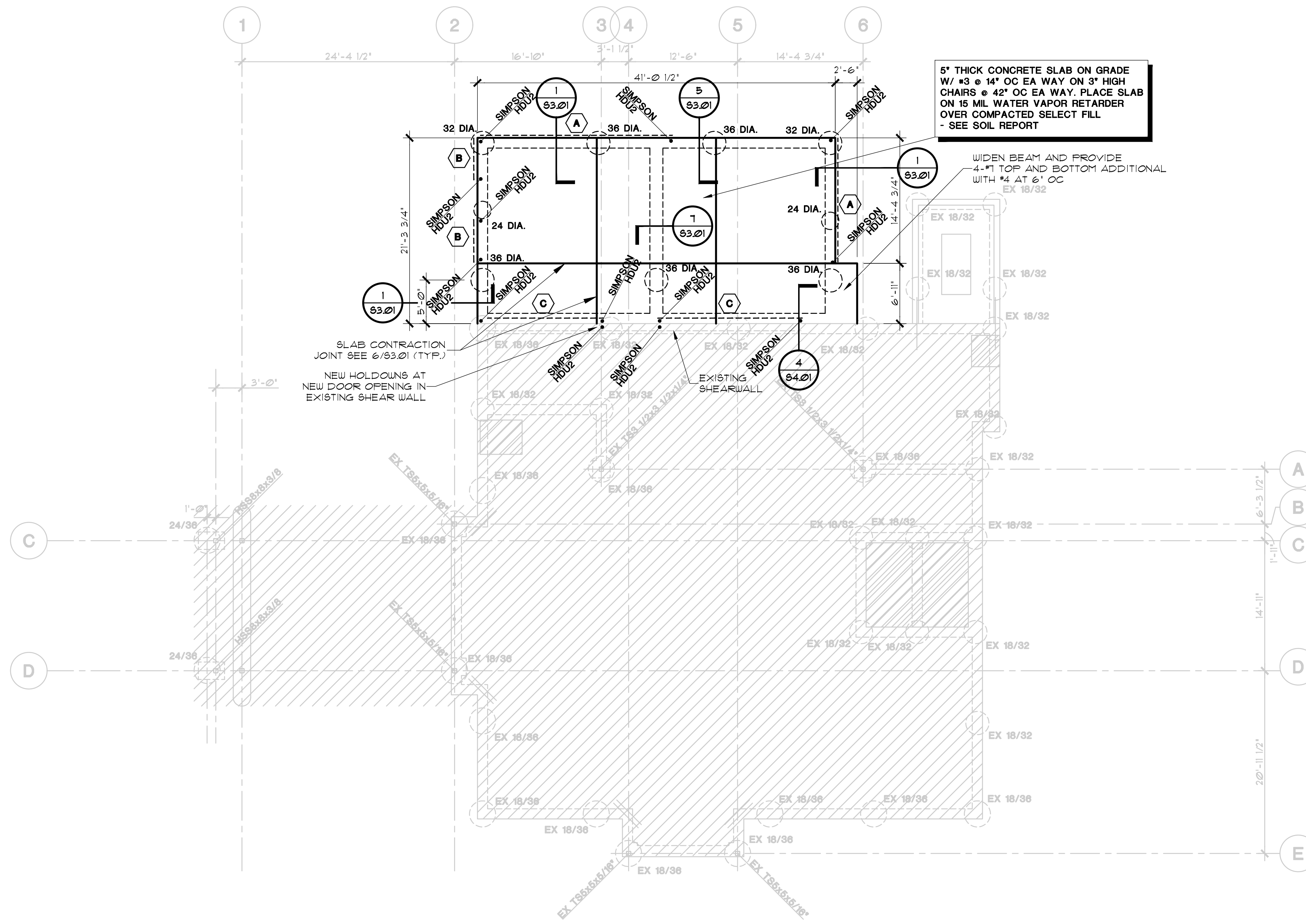


ARCHITECTURE PLANNING INTERIOR DESIGN
 15810 PARK TEN PLACE, SUITE 300
 HOUSTON, TEXAS 77084
 713-465-4650
 www.sligroup.com



NECHES LUMBERTON DRIVE-THRU REMODEL
 299 Country Lane at U.S. 69
 Lumberton, Texas 77657

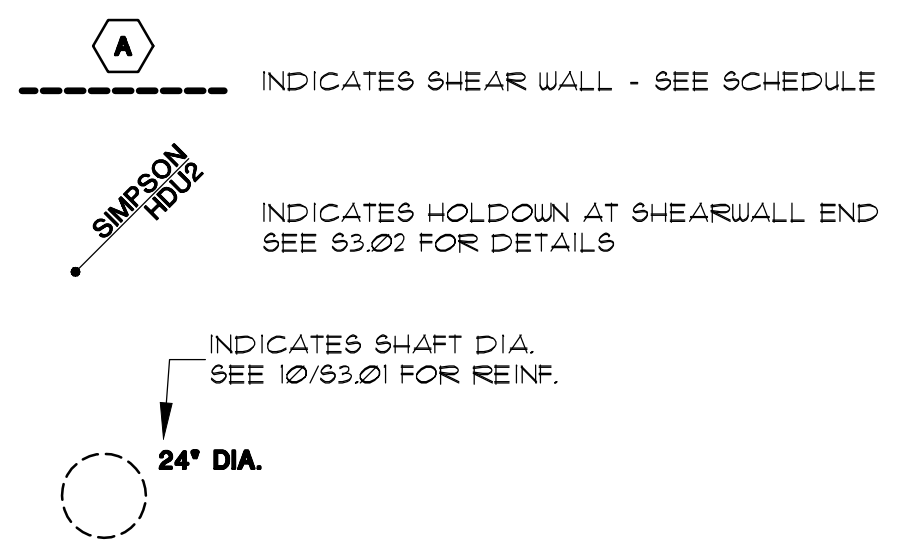
PROJECT NUMBER:



FOUNDATION PLAN
 SCALE: 1/8"=1'-0"

SHEAR WALL SCHEDULE							
MARK	ALLOWABLE LOAD	DESCRIPTION	NO. OF SIDES	SILL BOLTING	SHEAR TRANSFER	ALTERNATE SHEAR TRANSFER	
A	280 pif	1/2" STRUCT I PLYWOOD WITH ALL JOINTS BLOCKED NAIL AND WITH 8d NAILS AT 6" OC AT PANEL EDGES	ONE	1/2" BOLTS AT 36" OC	A35 AT 18" OC	16d AT 6" OC	LPTS @ 21" OC
B	550 pif	1/2" STRUCT I PLYWOOD WITH ALL JOINTS BLOCKED NAIL AND WITH 8d NAILS AT 3" OC AT PANEL EDGES	ONE	5/8" BOLTS AT 27" OC 1/2" BOLTS AT 18" OC	A35 AT 9" OC	16d AT 3" OC	LPTS @ 11" OC
C	175 pif	5/8" GYP. BOARD BLOCKED W/ 8d COOLER NAILS @ 4" O.C. (ALL SUPPORTS NAILED @ 4" O.C.)	ONE	1/2" BOLTS AT 48" OC	A35 AT 30" OC	16d AT 6" OC	LPTS @ 35" OC

1. NAIL ALL PANELS 12" O.C. AT INTERMEDIATE SUPPORTS UNLESS NOTED OTHERWISE. (ALL PANEL EDGES SHALL BE BLOCKED.)
 2. PROVIDE 3 VERT STUDS @ EACH END OF SHEAR WALL.



LEGEND

ISSUED FOR CLIENT APPROVAL	DATE
ISSUED FOR BIDDING	05/22/2026
ISSUED FOR PERMIT	05/22/2026
ISSUED FOR CONSTRUCTION	

REVISIONS		
MARK	DESCRIPTION	DATE
A	ADDENDUM B	05/22/2026

CJG Engineers
 Texas Engineering
 Firm Reg. No. F-170
 6051 North Course Dr Ste 375
 Houston, Texas 77072
 713.780.3345

The information, ideas, designs, details, layouts, techniques, features, arrangements, plans, sequences, dimensions, allowances, tolerances, conceptions, specifications, intentions, technology or embodiments, as illustrated, arranged, displayed, noted, recorded, indicated, represented, disclosed, evidenced, detailed or otherwise reduced to tangible form hereon, either expressly, inherently or by implication, are the confidential and proprietary information of SLI Design, Inc. and shall not be used for any purpose other than the specific project or undertaking identified on the drawing title block or legend for which they are and have been prepared by SLI Design, Inc. Any other reproduction, disclosure or use of any portion of the confidential and proprietary information of SLI Design, Inc. shall be a breach of the obligation of confidence created by the acceptance of this drawing from SLI Design, Inc. for a specific project or Contract. Any copying, duplicating, reproducing, utilization, alteration, modification, revision or change to this drawing, is expressly prohibited unless done with the prior written consent or approval of SLI Design, Inc. and shall not be undertaken without receipt of such prior written approval. This drawing is loaned by SLI Design, Inc. for the limited purpose of complying with a specific Contract. The drawing remains the property of SLI Design, Inc. and shall be returned upon request or completion of the contract, unless specifically authorized by Contract, under which it was loaned.

PRINT DATE: 22 May 2026

DRAWING TITLE FOUNDATION PLAN	
DRAWN BY AD	SHEET NO. S1.01
CHECKED BY BG	
APPROVED BY BG	