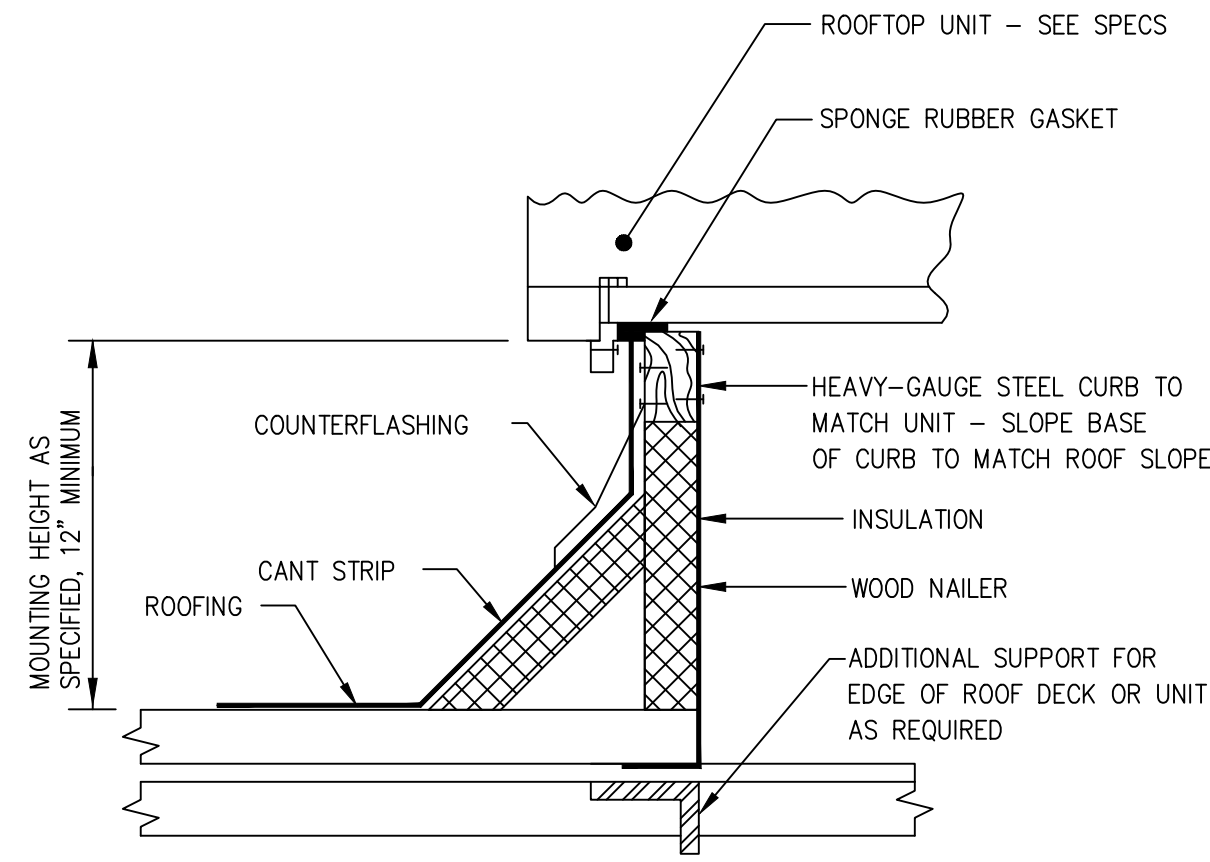


DUCT SUPPORT ON ROOF

SCALE: NONE

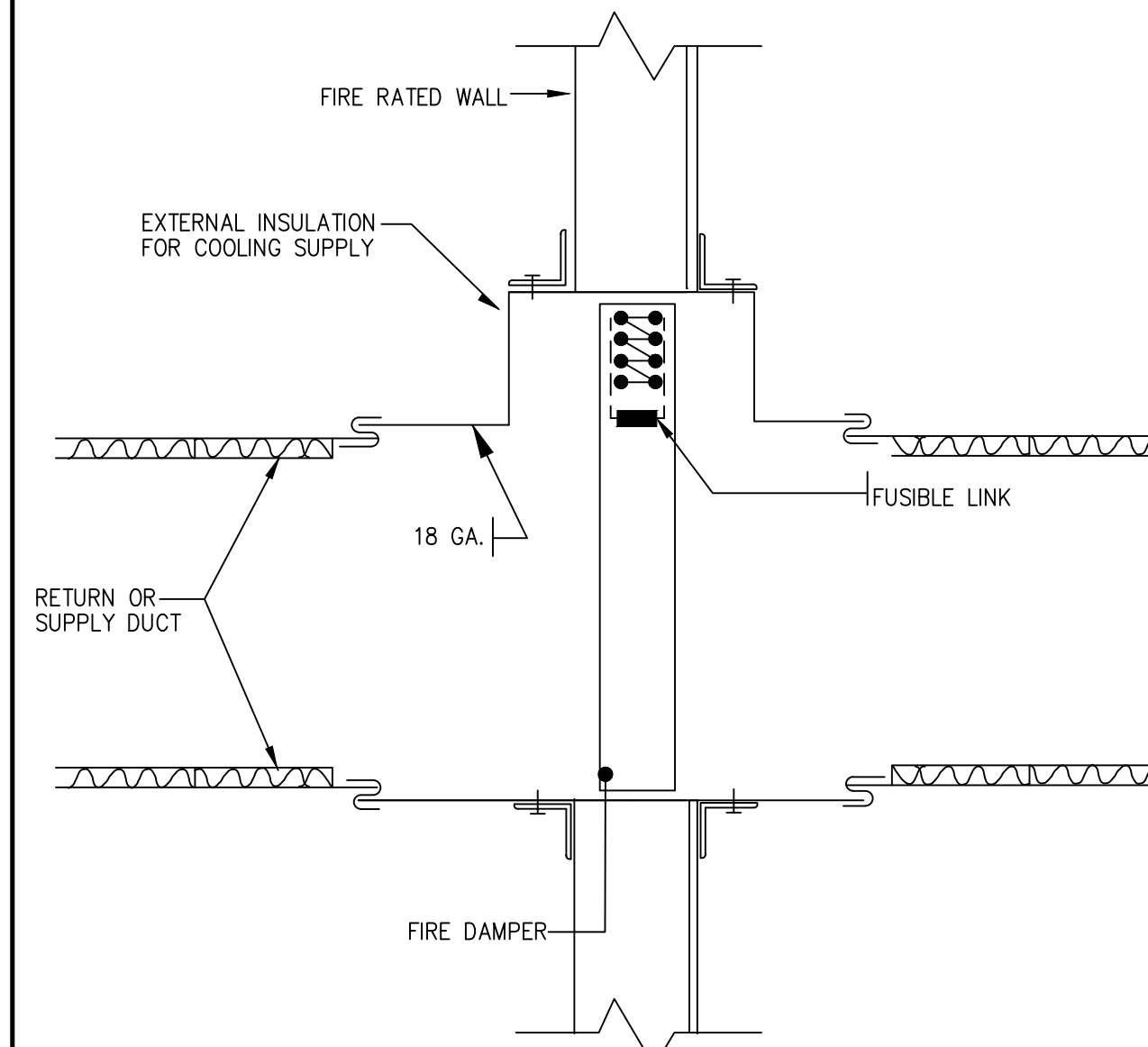
05



ROOFTOP EQUIPMENT CURB DETAIL

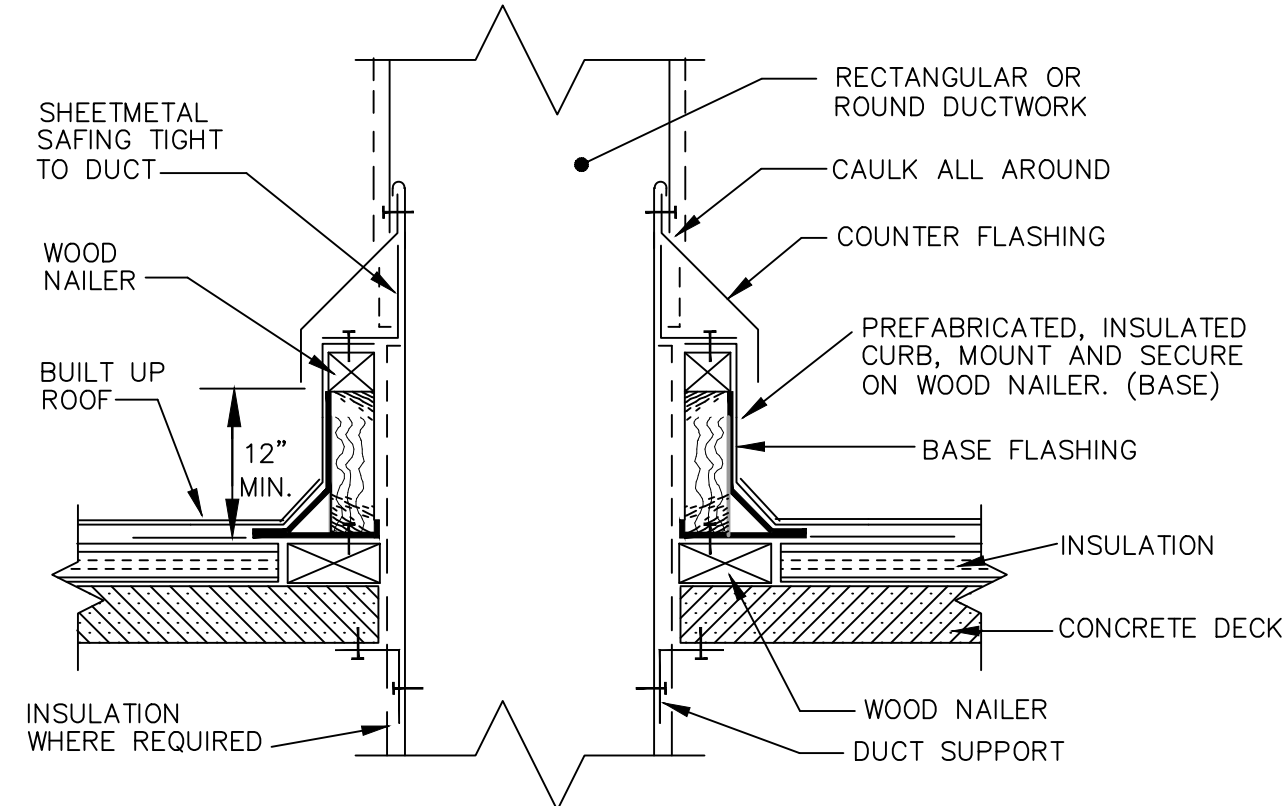
SCALE: NONE

03



NOTES:

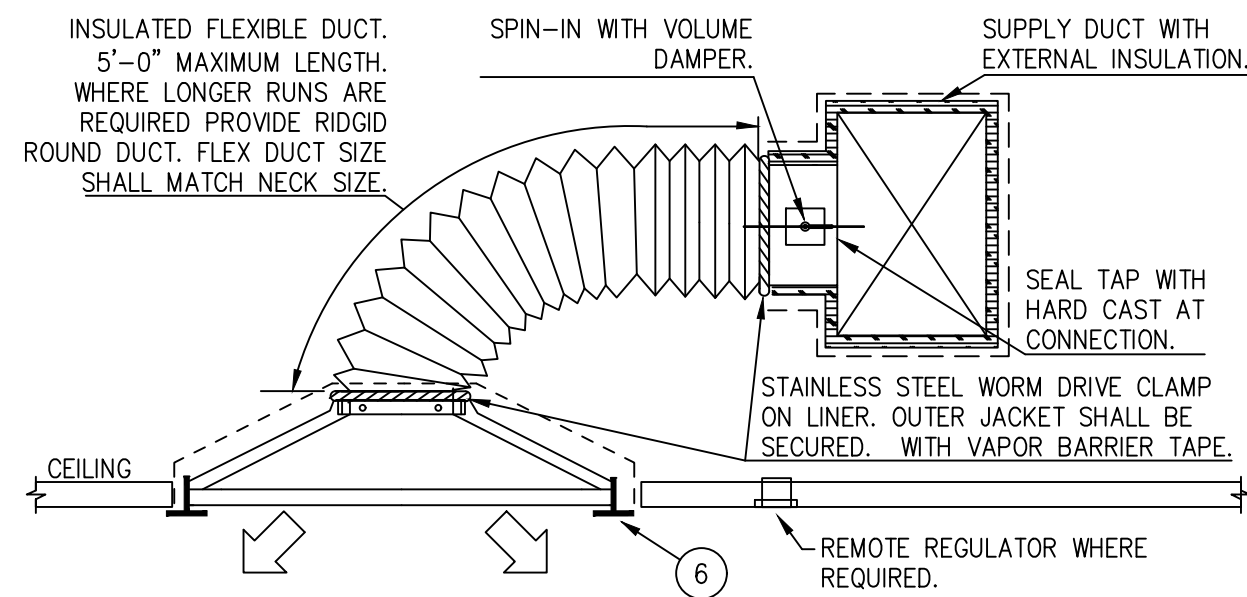
- THIS DETAIL IS PROVIDED FOR GENERAL INFORMATION ONLY. THE DAMPER MANUFACTURER'S RECOMMENDATIONS AND U.L. APPROVED INSTALLATION DETAILS SHALL HAVE PRIORITY OVER THIS DETAIL.
- DAMPER ASSEMBLY SHALL BE INSTALLED IN AND FASTENED TO THE DAMPER SLEEVE ASSEMBLY. SLEEVES SHALL BE 16GA. MINIMUM OR GREATER AS REQUIRED BY THE AUTHORITIES HAVING JURISDICTION.
- MAINTAIN FULL DUCT SIZE. DAMPER HOUSING SHALL NOT OBSTRUCT AIR FLOW, (TYPE "B").
- PROVIDE A MINIMUM EXPANSION CLEARANCE SPACE BETWEEN THE SLEEVE AND TOP OF WALL OPENING OF 1/8" PER LINEAR FOOT OF SLEEVE DIMENSION. SEAL OPENING WITH AN APPROVED FIRE/SMOKE SEALANT.
- RETAINING ANGLES SHALL BE PROVIDED IN ACCORDANCE WITH MANUFACTURER'S RECOMMENDATIONS, U.L. LISTING REQUIREMENTS, AND THE AUTHORITIES HAVING JURISDICTION. RETAINING ANLES SHALL BE INSTALLED ON FOUR SIDES OF THE SLEEVE AND ON EACH SIDE OF THE WALL OPENING. ANGLES SHALL BE FASTENED TO THE SLEEVE ONLY WITH 1/4" BOLTS OR 1/2" LONG WELDS WITH A MINIMUM OF TWO FASTENINGS PER SIDE, BEGINNING AT 2" FROM EACH CORNER OF THE SLEEVE AND 6" O.C. MAXIMUM. RETAINING ANGLES SHALL OVERLAP THE WALL A MINIMUM OF 1" AROUND THE ENTIRE OPENING. ANGLES SHALL BE A MINIMUM OF 12GA.. USE 1-1/2"x 1-1/2" ANGLES FOR DUCT DIMENSIONS 48" AND LESS. USE 2"x 2" ANGLES FOR DUCT DIMENSIONS 49" TO 72". USE 2"x 2"x 1/4" ANGLES FOR DUCT DIMENSIONS OVER 72".
- DUCT CONNECTION TO DAMPER ASSEMBLY SHALL BE MADE WITH "S" SLIP CONNECTIONS OR SIMILAR BREAK-AWAY TYPE CONNECTIONS IF APPROVED BY THE AUTHORITIES HAVING JURISDICTION. SEAL DUCT SEAM WITH NON-HARDENING SEALANT.
- PROVIDE DUCT ACCESS DOORS FOR EACH DAMPER TO ALLOW DAMPER CATCH TO BE RELEASED WITH THE DAMPER IN A CLOSED POSITION AND THE FUSIBLE LINK REPLACED TO ALLOW ACCESS TO THE CONCEALED DAMPER ACTUATORS. EACH ACCESS DOOR SHALL BE MARKED "FIRE/SMOKE DAMPER ACCESS" OR SIMILAR WORDING APPROVED BY THE AUTHORITIES HAVING JURISDICTION. ACCESS DOORS SHALL BE APPROVED FOR SUCH USE.
- DUCTWORK SHALL BE SUPPORTED FROM THE STRUCTURE AND NOT THE DAMPER ASSEMBLY.



DUCT PENETRATION THRU ROOF

SCALE: NONE

07



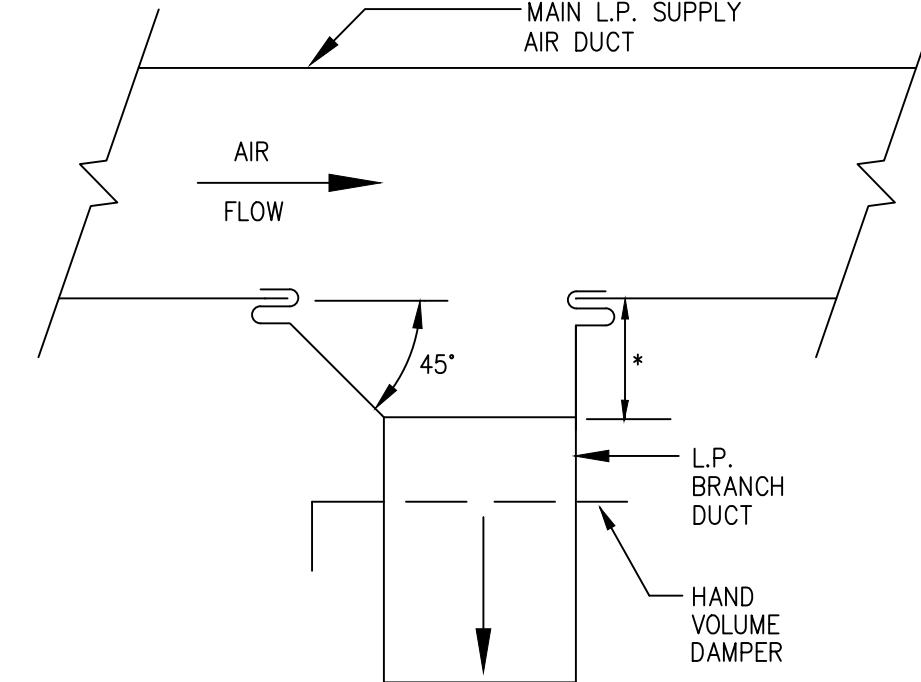
NOTES:

- CEILING DIFFUSER SHALL BE INSTALLED SUCH THAT THE FACE OF DIFFUSER IS FLUSH WITH CEILING. REFER TO AIR DEVICE SCHEDULE FOR EXACT DEVICE.
- SUPPORT FLEXIBLE DUCT FROM STRUCTURE. FLEXIBLE DUCT SHALL NOT KINK, SAG OR REST ON LIGHT FIXTURE, CEILING SUPPORT "TEES" OR CEILING TILE.
- PROVIDE SQUARE TO ROUND TAP AT BRANCH DUCT WHERE FLEXIBLE DUCT SIZE EXCEEDS DIMENSION OF RECTANGULAR DUCT.
- FOR UNCONDITIONED CEILING PLENUMS, INSULATE BACK OF CEILING DIFFUSER WITH 1" DUCT WRAP AND SEAL WITH VAPOR BARRIER TAPE.
- METALLIC FLEXIBLE DUCT SHALL BE USED WHERE FLEXIBLE DUCT CONNECTIONS ARE SHOWN ON THE DRAWING TO ALL AIR DEVICES INSTALLED IN INACCESSIBLE LOCATIONS SUCH AS ABOVE GYPSUM BOARD OR PLASTER CEILINGS. (REFER TO ARCH. DRAWINGS FOR CEILING TYPE.)
- CEILING "TEE" OR DRYWALL TRIM PIECE BY OTHERS.

CEILING DIFFUSER

SCALE: NONE

06



*-EQUALS WIDTH OF BRANCH DUCT UP TO 12". 12" FOR ALL BRANCH DUCTS LARGER THAN 12".

TYP. LOW PRESSURE DUCT TAKE-OFF

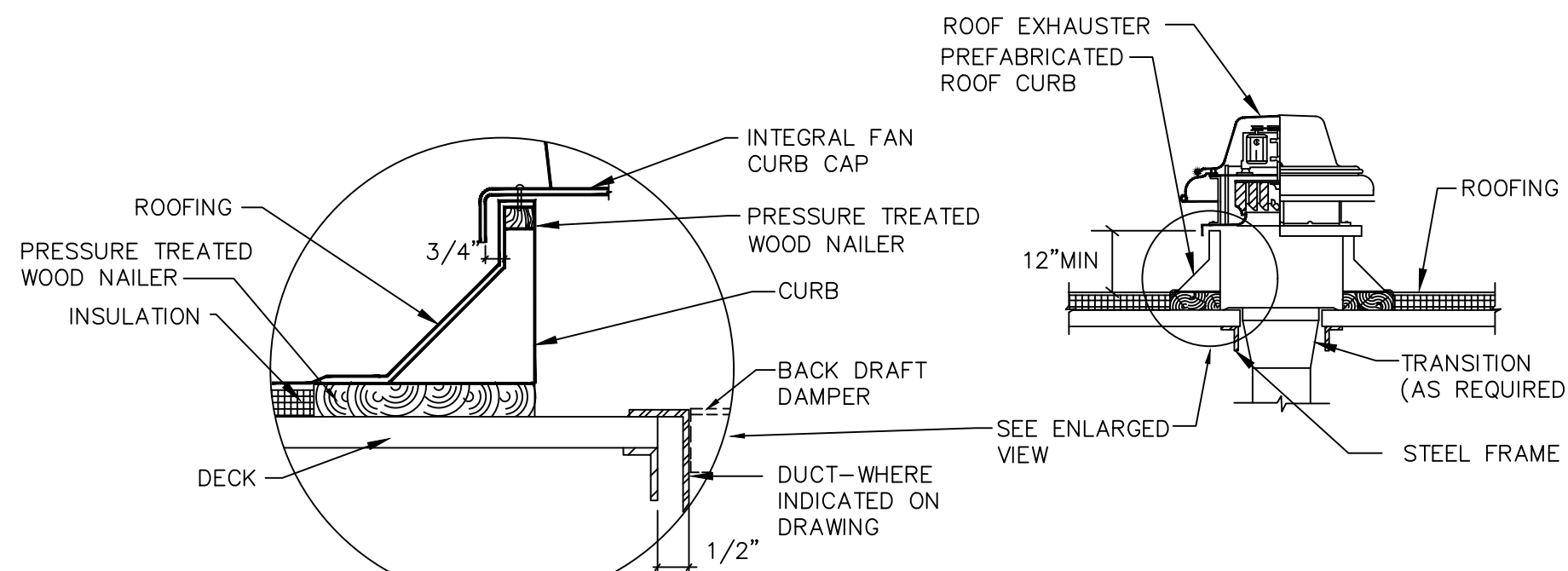
SCALE: NONE

04

FIRE DAMPER INSTALLATION

SCALE: NONE

01



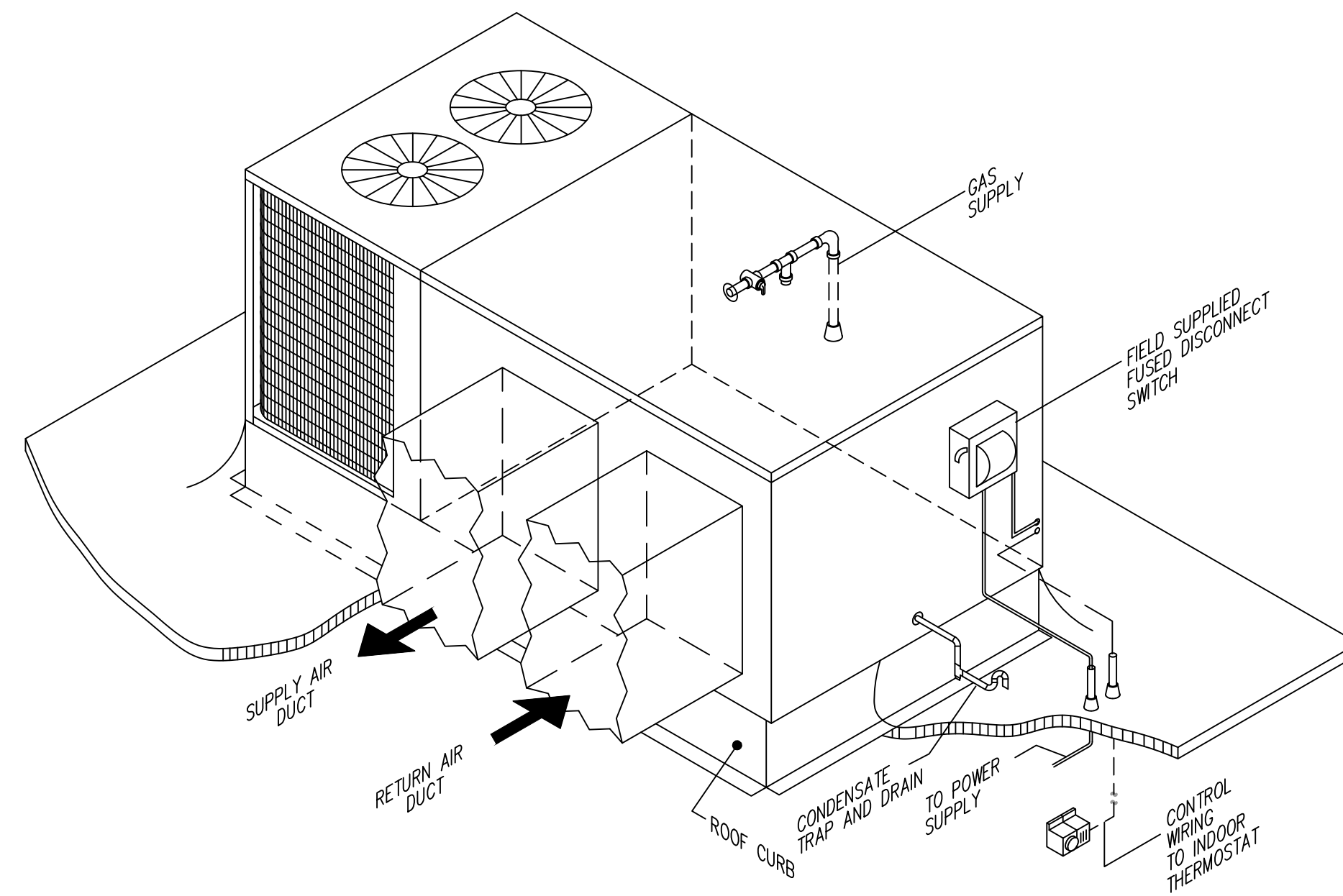
NOTES:

- WHERE NO DUCT IS INDICATED, BACKDRAFT DAMPER SHALL BE FULL SIZE OF OPENING IN ROOF DECK.
- ROOF MOUNTED EXHAUST FANS SHALL NOT BE MOUNTED ON A SLOPE OF GREATER THAN 6:12. SEE GENERAL NOTES.

ROOF MOUNTED EXHAUST FAN

SCALE: NONE

08



PACKAGED HVAC UNIT WITH HORIZONTAL SUPPLY AND RETURN DUCTS

SCALE: NONE

02

SCALE: N.T.S.

E|B|E Mechanical Electrical Plumbing
CONSULTING ENGINEERS
12605 Southwest Fwy, Ste 170, Stafford, Tx 77477
Tel: (713) 840-0177 / Firm Reg. No: 5638

PM	MECH	ELEC	PLBG	CHK
JG	THV	JG	BM	JG



ARCHITECTURE PLANNING INTERIOR DESIGN
15810 PARK TEN PLACE, SUITE 300
HOUSTON, TEXAS 77084
713-465-4650
www.sligroup.com

BAGEL BEE



400 W. DAVIS, SUITE 110
CONROE, TX 77301

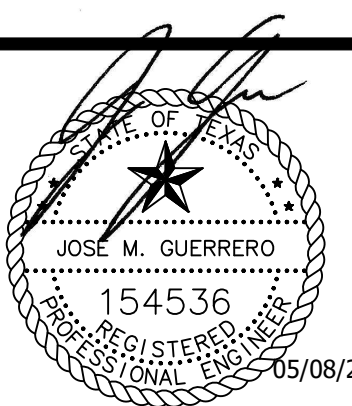
E|B|E Project Number : 26049.00

ISSUED FOR CLIENT APPROVAL	DATE
ISSUED FOR BIDDING	05/08/2026
ISSUED FOR PERMIT	05/08/2026
ISSUED FOR CONSTRUCTION	

REVISIONS

MARK	DESCRIPTION	DATE
	90% REVIEW SET	2026/04/07
	PERMIT AND BID SET	2026/05/08

The information, ideas, designs, details, layouts, techniques, features, arrangements, plans, sequences, dimensions, allowances, tolerances, conceptions, specifications, intentions, technology or embodiments, as illustrated, arranged, displayed, noted, recorded, indicated, represented, disclosed, evidenced, detailed or otherwise reduced to tangible form herein, either expressly, inherently or by implication, are the confidential and proprietary information of SLI Design, Inc., and shall not be used for any purpose other than the specific project or undertaking identified on the drawing title block or legend for which they are and have been prepared by SLI Design, Inc. for a specific project or contract. Any copying, duplicating, reproducing, utilization, alteration, modification, revision or change to this drawing, is expressly prohibited unless done with the prior written consent or approval of SLI Design, Inc., and shall not be undertaken without receipt of such prior written approval. This drawing is loaned by SLI Design, Inc., for the limited purpose of complying with a specific contract. The drawing remains the property of SLI Design, Inc., and shall be returned upon request or completion of the contract, unless specifically authorized by contract, under which it was loaned.



DRAWING TITLE
MECHANICAL DETAILS

SHEET NO.

M2.01