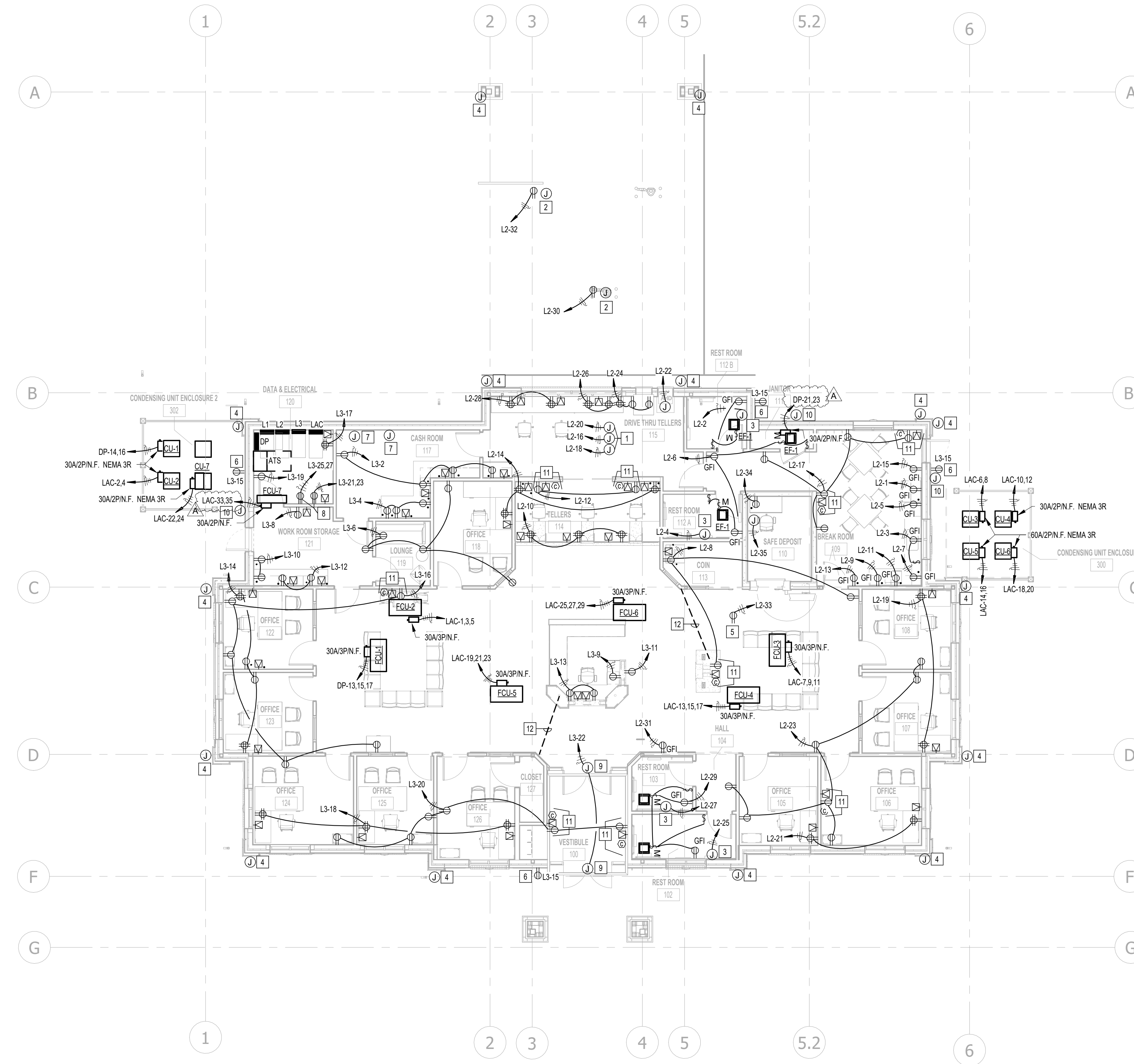


**ELECTRICAL POWER PLAN GENERAL NOTES**  
 A. ALL ELECTRICAL DEVICE LOCATIONS ARE APPROXIMATE. FOR EXACT LOCATION REFER TO ARCHITECTURAL DRAWINGS.

**KEYED NOTES**

#	KEYNOTE
1	TELLER - VIDEO, AUDIO AND SWITCHER. COORDINATE EXACT LOCATION IN FIELD.
2	4-1" CONDUIT WITH PULL STRING FOR AUDIO/VIDEO AND CONTROLS BACK TO TELLERS. COORDINATE EXACT REQUIREMENTS IN FIELD.
3	JUNCTION BOX FOR HAND DRYER. COORDINATE EXACT REQUIREMENTS IN FIELD.
4	JUNCTION BOX FOR SECURITY CAMERAS AT 9'-6". PROVIDE 3/4" CONDUIT WITH PULL STRING BACK TO ELECTRICAL ROOM 118. COORDINATE WITH SECURITY COMPANY PRIOR TO INSTALLATION.
5	RECEPTACLE IN ATTIC. COORDINATE EXACT LOCATION/REQUIREMENTS IN FIELD.
6	W/PGFI RECEPTACLE WITH LOCKABLE COVER. COORDINATE EXACT REQUIREMENTS IN FIELD.
7	3/4" CONDUIT TO ABOVE CEILING WITH PULL STRING. COORDINATE EXACT REQUIREMENTS IN FIELD.
8	L6-30R. COORDINATE EXACT LOCATION/REQUIREMENTS IN FIELD.
9	JUNCTION BOX FOR DOOR OPENER. COORDINATE EXACT REQUIREMENTS IN FIELD.
10	JUNCTION BOX FOR CARD READER. PROVIDE 3/4" CONDUIT TO ABOVE CEILING WITH PULL STRING. COORDINATE EXACT REQUIREMENTS IN FIELD.
11	FOR TV, REFER TO ARCHITECTURAL DRAWINGS FOR MOUNTING HEIGHT
12	PROPOSED ROUTING LOCATION. STUB UP UNDER FURNITURE. COORDINATE EXACT LOCATION/REQUIREMENTS IN FIELD.



**1 ELECTRICAL POWER PLAN**  
 1/8" = 1'-0"



ARCHITECTURE PLANNING INTERIOR DESIGN  
 15810 PARK TEN PLACE, SUITE 300  
 HOUSTON, TEXAS 77084  
 713-465-4650  
 www.sligroup.com

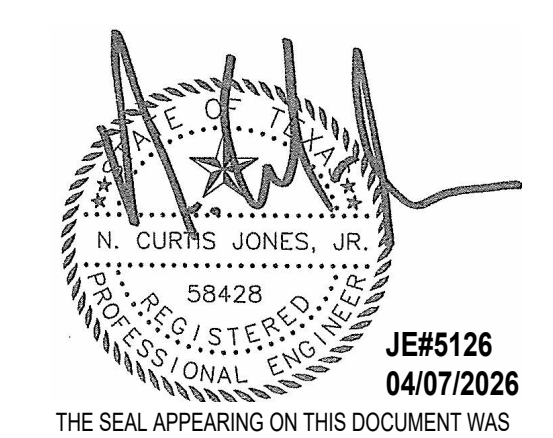
**Shell Federal**  
 CREDIT UNION  
 26620 FM 1093 RD  
 KATY, TEXAS 77494

ISSUED FOR CLIENT APPROVAL	DATE
ISSUED FOR BIDDING	
ISSUED FOR PERMIT	
ISSUED FOR CONSTRUCTION	

MARK	DESCRIPTION	DATE
A	ISSUE FOR BID	04/07/2026
	ADDENDUM 1	04/23/2026

The information, ideas, designs, details, layouts, techniques, features, arrangements, plans, sequences, dimensions, allowances, tolerances, conceptions, specifications, intentions, technology or embodiments, as illustrated, arranged, displayed, noted, recorded, indicated, represented, disclosed, evidenced, detailed or otherwise reduced to tangible form herein, either expressly, inherently or by implication, are the confidential and proprietary information of SLI Design, Inc., and shall not be used for any purpose other than the specific project or undertaking identified on the drawing title block or legend for which they are and have been prepared by SLI Design, Inc. Any other reproduction, disclosure or use of any portion of the confidential and proprietary information of SLI Design, Inc., shall be a breach of the obligation of confidence created by the acceptance of this drawing from SLI Design, Inc. for a specific project or Contract. Any copying, duplicating, reproducing, utilization, alteration, modification, revision or change to this drawing is expressly prohibited unless done with the prior written consent or approval of SLI Design, Inc., and shall not be undertaken without receipt of such prior written approval. This drawing is loaned by SLI Design, Inc., for the limited purpose of complying with a specific Contract. The drawing remains the property of SLI Design, Inc., and shall be returned upon request or completion of the contract, unless specifically authorized by Contract, under which it was loaned.

PRINT DATE: 4/23/2026 10:23:16 AM



**JONES ENGINEERS, L.P.**  
 Consulting Mechanical/Electrical/Plumbing Engineers  
 9820 Whithorn Dr. Houston, Texas 77095 (713)222-7766  
 Texas Registered Engineering Firm #F-3811

DRAWING TITLE	
<b>ELECTRICAL POWER PLAN</b>	
DRAWN BY JE	SHEET NO.
CHECKED BY JE	<b>EP1.01</b>
APPROVED BY JE	

Autodesk Doc/01/08 - SFCU FullArea126\_MEP\_SFCU FullArea\_126.rvt