



ARCHITECTURE PLANNING INTERIOR DESIGN
15810 PARK TEN PLACE, SUITE 300
HOUSTON, TEXAS 77084
713-465-4650
www.sligroup.com

Shell Federal
CREDIT UNION
26620 FM 1093 RD
KATY, TEXAS 77494

Project Number : 8825

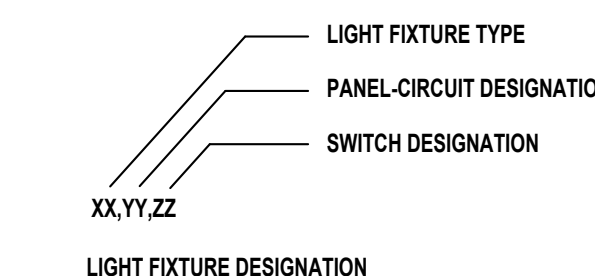
ISSUED FOR CLIENT APPROVAL	DATE	
ISSUED FOR BIDDING		
ISSUED FOR PERMIT		
ISSUED FOR CONSTRUCTION		
REVISIONS		
MARK	DESCRIPTION	DATE
A	ISSUE FOR BID	04/07/2026
	ADDENDUM 1	04/23/2026

The information, ideas, designs, details, layouts, techniques, features, arrangements, plans, sequences, dimensions, allowances, tolerances, conceptions, specifications, intentions, technology or embodiments, as illustrated, arranged, displayed, noted, recorded, indicated, represented, disclosed, evidenced, detailed or otherwise reduced to tangible form herein, either expressly, inherently or by implication, are the confidential and proprietary information of SLI Design, Inc., and shall not be used for any purpose other than the specific project or undertaking identified on the drawing title block or legend for which they are and have been prepared by SLI Design, Inc. Any other reproduction, disclosure or use of any portion of the confidential and proprietary information of SLI Design, Inc., shall be a breach of the obligation of confidence created by the acceptance of this drawing from SLI Design, Inc. for a specific project or Contract. Any copying, duplicating, reproducing, utilization, alteration, modification, revision or change to this drawing is expressly prohibited unless done with the prior written consent or approval of SLI Design, Inc. and shall not be undertaken without receipt of such prior written approval. This drawing is loaned by SLI Design, Inc. for the limited purpose of complying with a specific Contract. The drawing remains the property of SLI Design, Inc. and shall be returned upon request or completion of the contract, unless specifically authorized by Contract, under which it was loaned.

PRINT DATE: 4/23/2026 10:23:13 AM

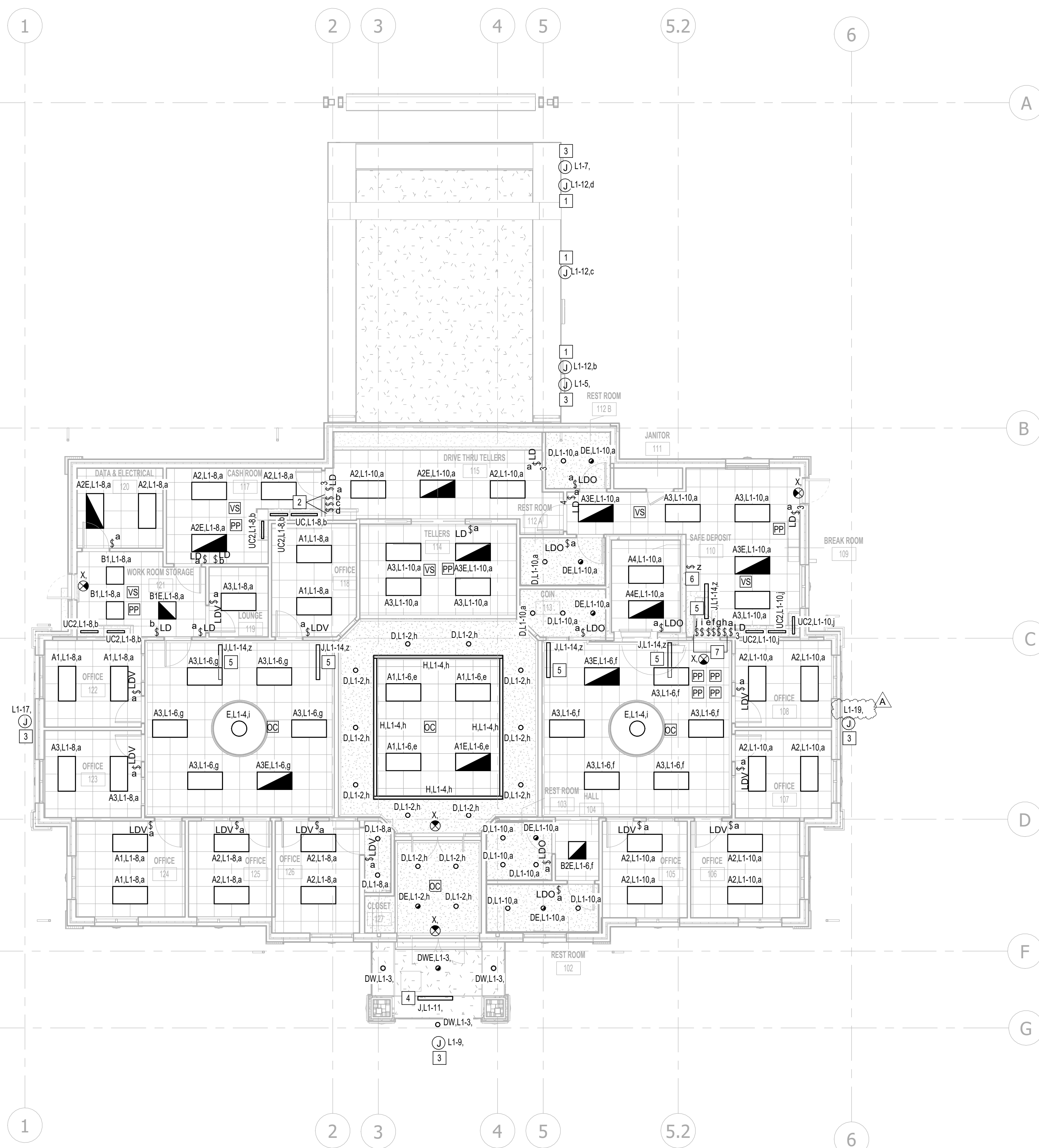
- ELECTRICAL LIGHTING PLAN GENERAL NOTES**
- ALL LIGHT FIXTURE LOCATIONS ARE APPROXIMATE. FOR EXACT LOCATION REFER TO ARCHITECTURAL DRAWINGS.
 - ALL OCCUPANCY SENSORS SHALL PROVIDE FULL ROOM COVERAGE. PROVIDE POWER PACKS AND OVERRIDE SWITCHES AS REQUIRED FOR CONTROL INDICATED.
 - ALL CEILING MOUNTED DEVICES LOCATED IN LAY-IN CEILINGS SHALL BE CENTERED IN THE CEILING TILE.
 - MULTIPLE SWITCHES SHOWN TOGETHER SHALL BE GANGED TOGETHER UNDER A COMMON COVER PLATE.
 - PROVIDE UNSWITCHED CIRCUIT TO ALL EXIT SIGNS AS INDICATED.
 - CONTRACTOR SHALL INDICATE LIGHTING CIRCUIT CONTROLLED BY EACH SWITCH BY PROVIDING TYPE WRITTEN LABELING LOCATED ON INSIDE FACE OF EACH SWITCH COVER PLATE.
 - FIXTURES DESIGNATED "NL" SHALL BE UNSWITCHED NIGHTLIGHT.
 - EMERGENCY CIRCUITS SHALL BE ROUTED IN SEPARATE CONDUIT FOR EMERGENCY LIGHTING.
 - PROVIDE ALL EMERGENCY LIGHT FIXTURES WITH UNSWITCHED HOT LEG AS DEFINED IN NEC 700.12

#	KEYNOTE
1	LANE LIGHTS PROVIDED BY BANK EQUIPMENT SUPPLIER.
2	3 POSITION SWITCH
3	SIGN. COORDINATE EXACT REQUIREMENTS IN FIELD.
4	FIXTURE 'J', 'Z' A.F.F. COORDINATE EXACT LOCATION WITH ARCHITECT.
5	LIGHT FIXTURE IN ATTIC. COORDINATE EXACT LOCATION WITH ARCHITECT.
6	SWITCH FOR LIGHT FIXTURES IN ATTIC. COORDINATE EXACT LOCATION WITH ARCHITECT.
7	LOW VOLTAGE SWITCH(S) (0-10V DIMMER).



LIGHTING CONTROL LEGEND

OC	CEILING MOUNTED OCCUPANT SENSOR. PROVIDE FULL ROOM COVERAGE. CONNECT LIGHT FIXTURES SERVING ROOM THROUGH NEW SENSOR(S). AUTO OFF / AUTO ON.
VC	CEILING MOUNTED OCCUPANT SENSOR. PROVIDE FULL ROOM COVERAGE. CONNECT LIGHT FIXTURES SERVING ROOM THROUGH NEW SENSOR(S). LIGHTS MUST BE TURNED ON MANUALLY (OR OPTIONALLY CAN BE CONFIGURED TO COME ON AUTOMATICALLY TO 50%).
PP	LIGHTING CONTROL POWER PACK.
LD	LOW VOLTAGE SWITCH(S) (0-10V DIMMER).
LDV	WALL MOUNTED OCCUPANT SENSOR WITH 0-10V DIMMER. PROVIDE FULL ROOM COVERAGE. CONNECT LIGHT FIXTURES SERVING ROOM THROUGH NEW SENSOR(S). LIGHTS MUST BE TURNED ON MANUALLY (OR OPTIONALLY CAN BE CONFIGURED TO COME ON AUTOMATICALLY TO 50%).
LDO	WALL MOUNTED OCCUPANT SENSOR WITH 0-10V DIMMER. PROVIDE FULL ROOM COVERAGE. CONNECT LIGHT FIXTURES SERVING ROOM THROUGH NEW SENSOR(S). AUTO OFF / AUTO ON.
S	LINE VOLTAGE SWITCH



1 ELECTRICAL LIGHTING PLAN
1/8" = 1'-0"

JE#5126
 04/07/2026
 THE SEAL APPEARING ON THIS DOCUMENT WAS AUTHORIZED BY N. CURTIS JONES, JR. P.E. 58428
JONES ENGINEERS, L.P.
 Consulting Mechanical/Electrical/Plumbing Engineers
 9820 Whithorn Dr. Houston, Texas 77095 (713)222-7766
 Texas Registered Engineering Firm #F-3811

DRAWING TITLE	
ELECTRICAL LIGHTING PLAN	
DRAWN BY: JE	SHEET NO.:
CHECKED BY: JE	EL1.01
APPROVED BY: JE	

Autodesk Doc/01/08 - SFCU FullArea5126 MEP_SFCU FullArea_1/26.rvt